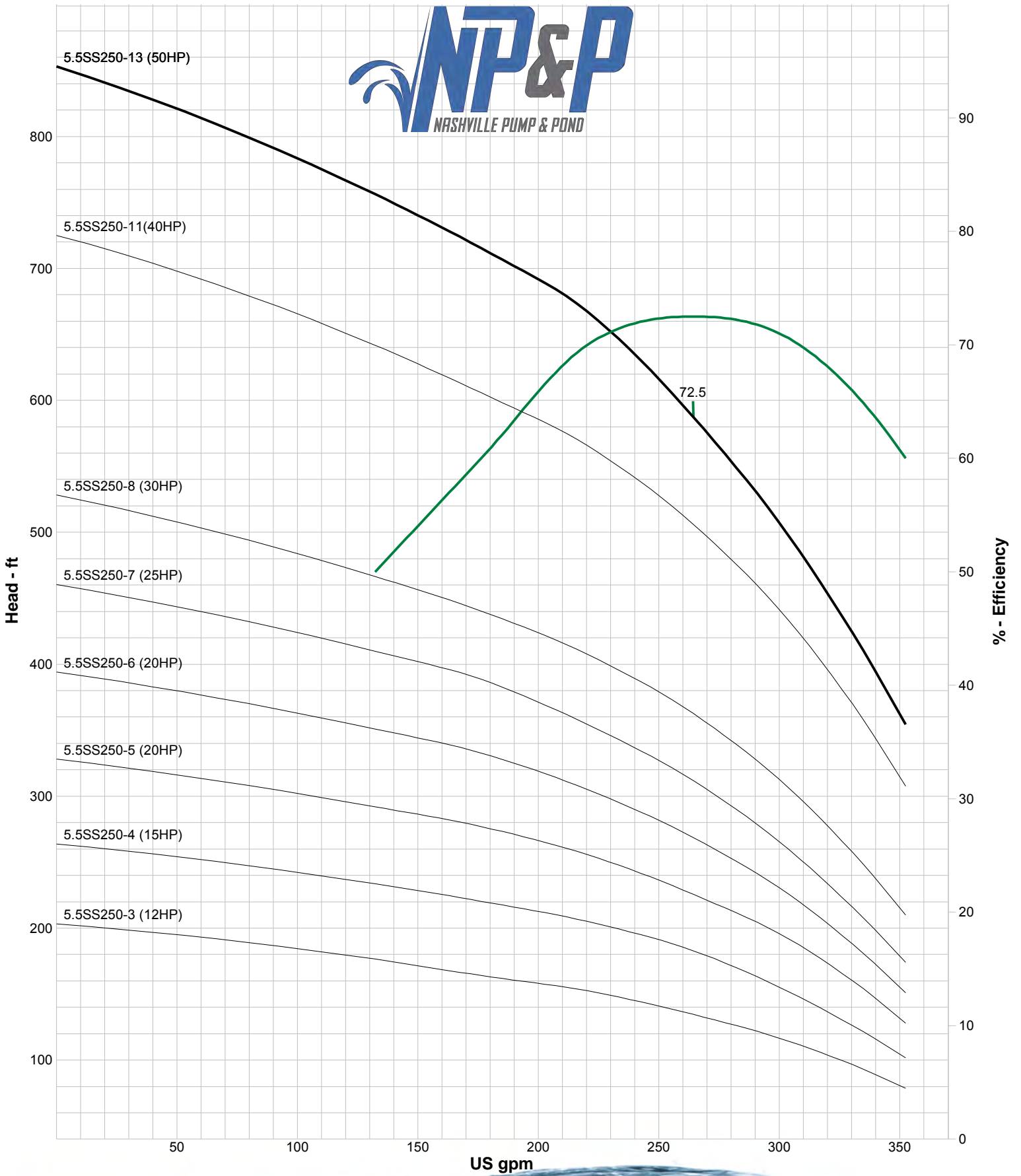


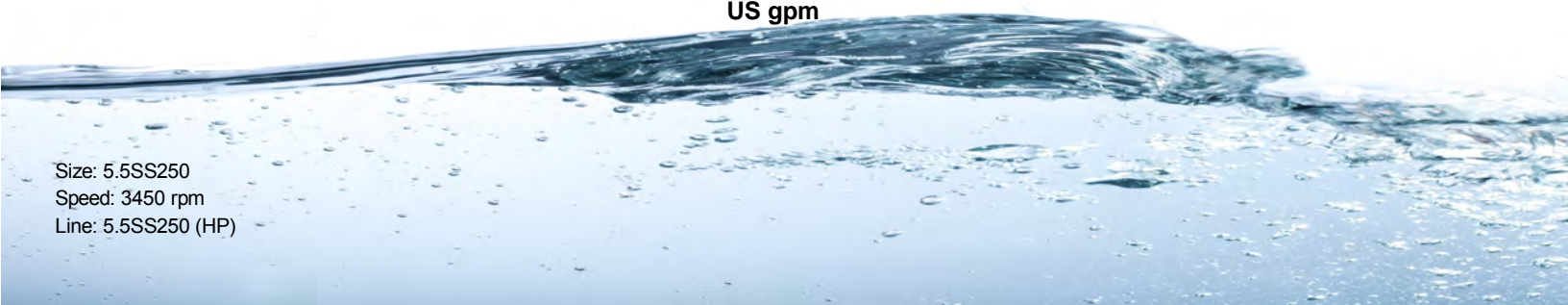


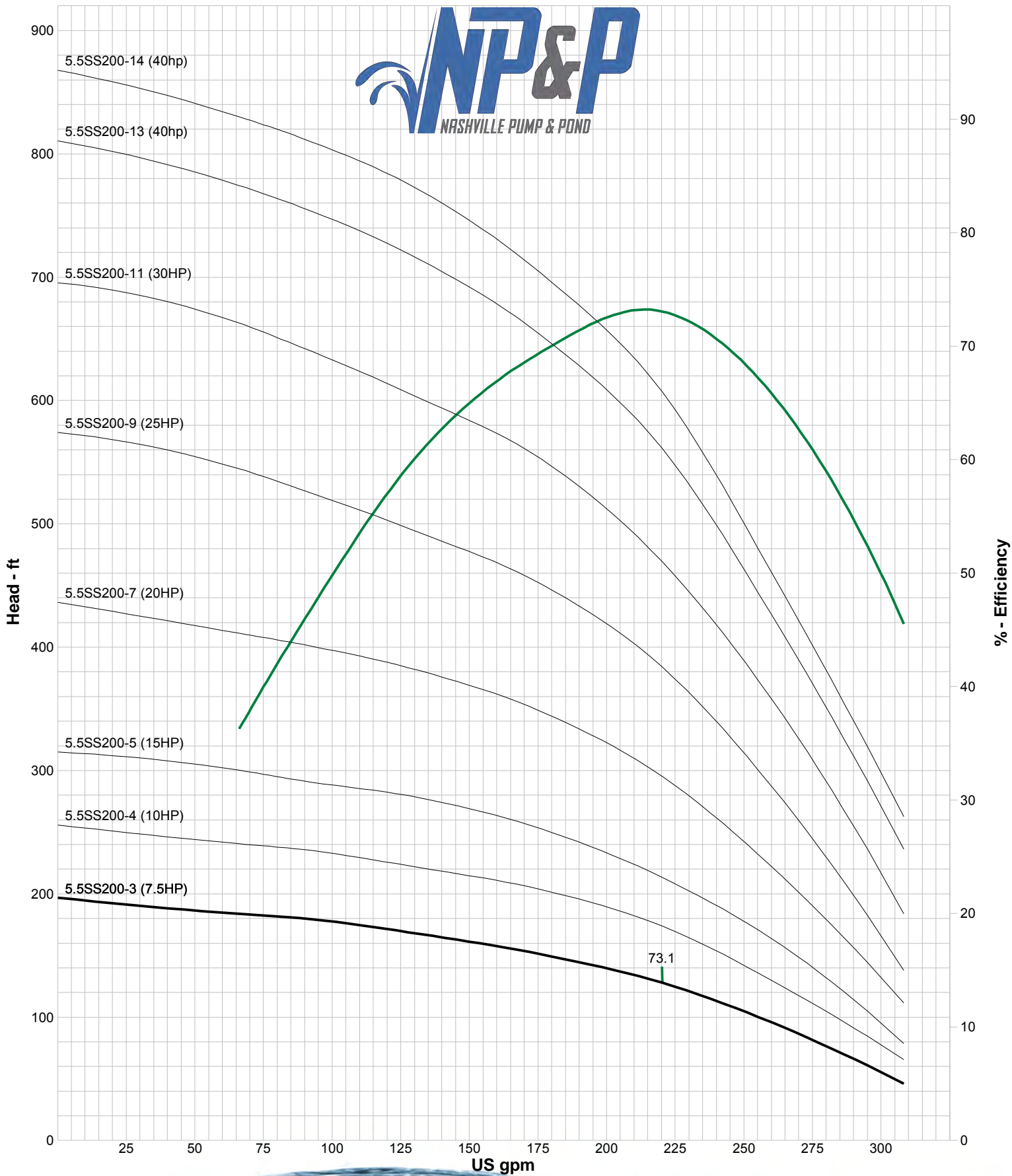
Strap Pump





Size: 5.5SS250
Speed: 3450 rpm
Line: 5.5SS250 (HP)



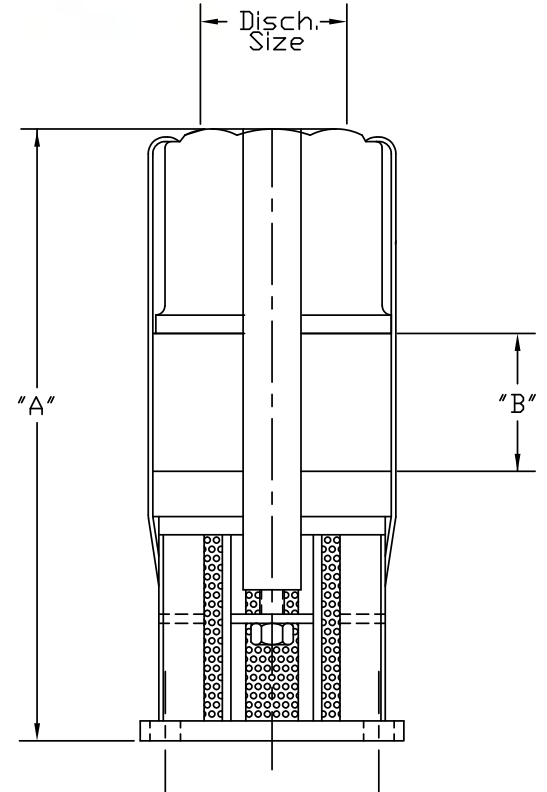


Size: 5.5SS200
Speed: 3450 rpm
Line: 5.5SS200 (HP)

Model	NEMA Motor Brkt.	"A" Single Stage	"B" Add Stage	Max. O.D. *	Disch. Size	First Stage Wt.	Add'l Stage Wt.
5.5SS100	4,6	12.125	2.375	5.5	2.5"NPT	11	3
5.5SS150	6	13.75	3.250	5.5	3" NPT	13	4.5
5.5SS200	6	14.50	3.687	5.5	3" NPT	14.5	5
5.5SS250	6	14.50	3.687	5.5	3" NPT	15	5.5

SPECIFICATIONS ARE SUBJECT TO CHANGE WITHOUT NOTICE
(All dimensions are in inches and weights in lbs.)

MATERIAL OF CONSTRUCTION CAST PARTS	
PART	MATERIAL SPECIFICATION
DISCHARGE FLANGE	304 STAINLESS STL.
DISCHARGE BEARING	BUNA RUBBER
BEARING SEAL	BUNA RUBBER
DISCHARGE O-RING	BUNA RUBBER
BOWL	304 STAINLESS STL.
BOWL BEARING	BUNA RUBBER
IMPELLER	304 STAINLESS STL.
MOTOR BRACKET	304 STAINLESS STL.
STRAPS	304 STAINLESS STL.
MOTOR COUPLING	304 STAINLESS STL.
SHAFT	304 STAINLESS STL.
SHAFT SLEEVES	304 STAINLESS STL.
CAP SCREWS	304 STAINLESS STL.



FLOATING PUMP STATION

Simple. Portable.

*ROCK QUARRY, MINING,
& RETENTION POND APPLICATIONS*

Seal Flush Water

Wash Down Stations

Water Transfer

Irrigation Supply Water

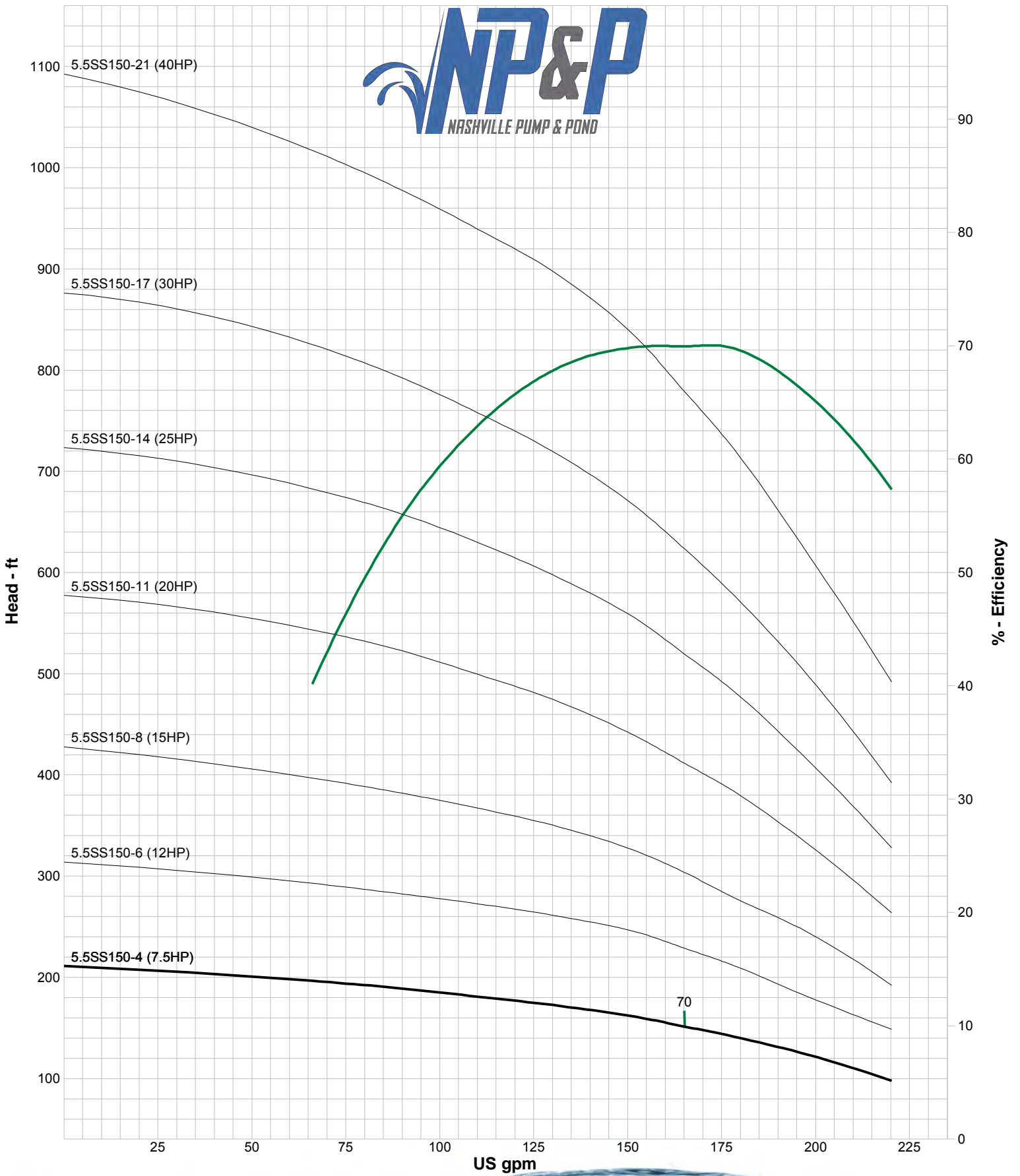
Cooling Water Supply

- Low Volume High Head & High Volume Low Head Designs available
- 5hp to 15hp Assemblies In Stock, Larger Units Available
- Single Phase and Three Phase Options
- Clean Water Intake Design with Internal Flow Sleeve for Cooling & Long Life
- Multiple Discharge Configurations, above and below water surface options
- Removable waterproof plug on power lead for ease of installation, transport & maintenance

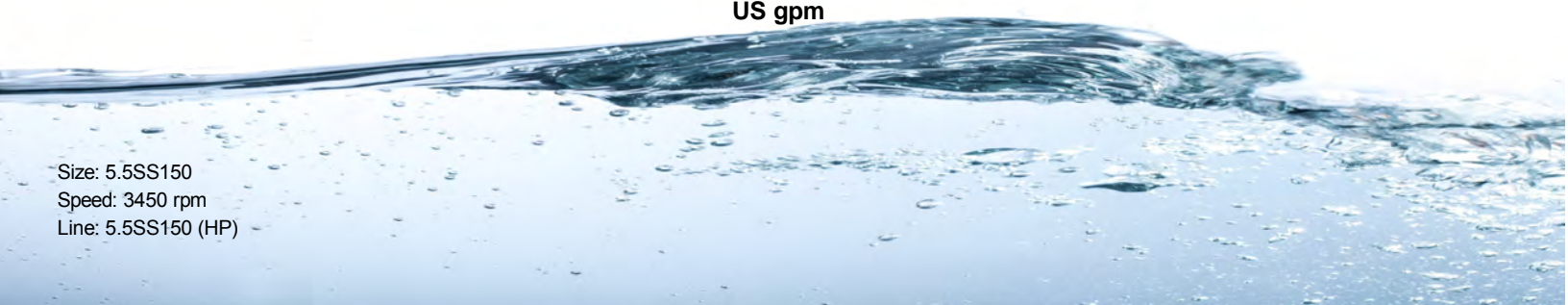


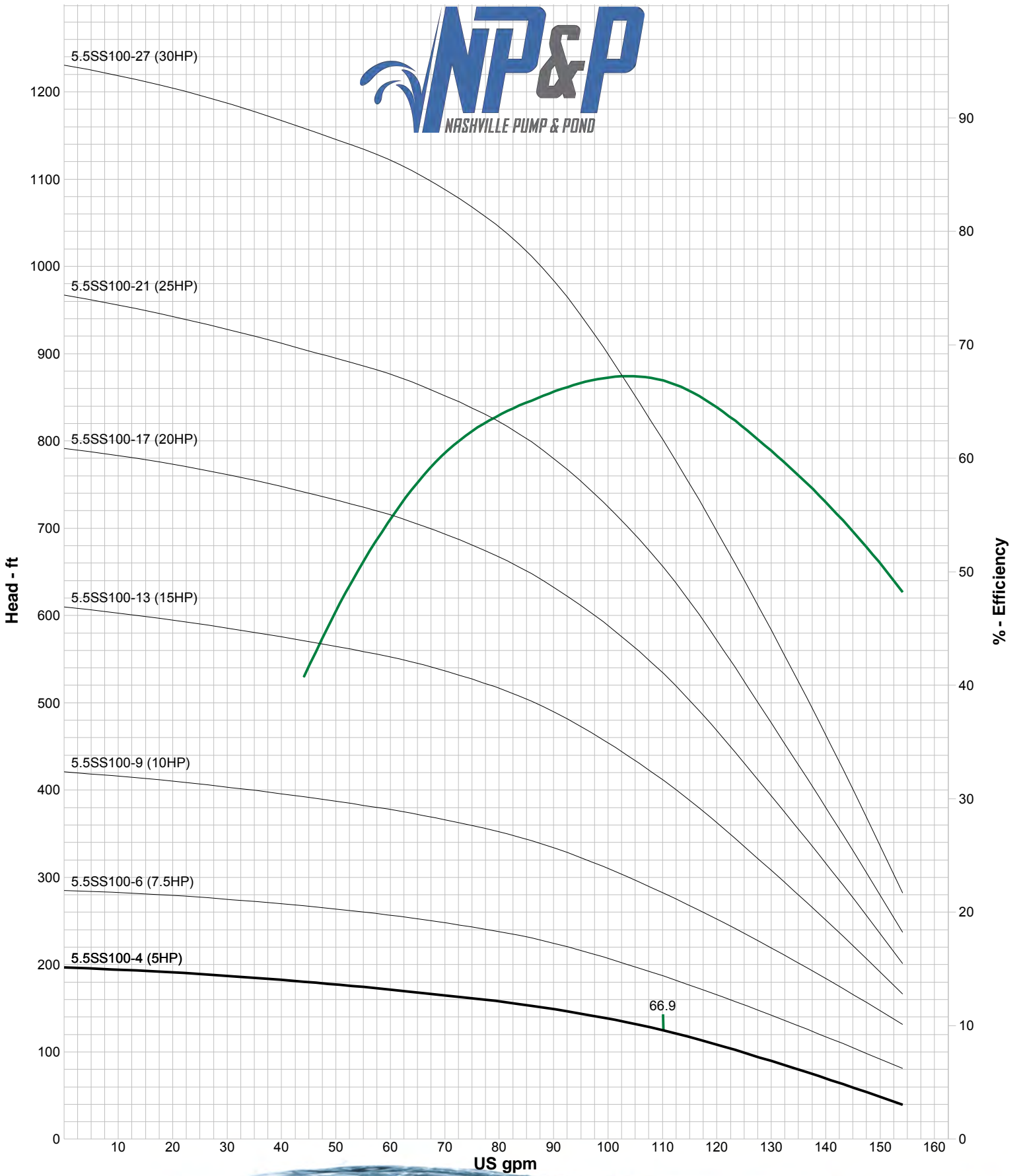
GE Control Panels

NP&P
NASHVILLE PUMP & POND



Size: 5.5SS150
Speed: 3450 rpm
Line: 5.5SS150 (HP)





Size: 5.5SS100
Speed: 3450 rpm
Line: 5.5SS100 (HP)



WWW.PUMPANDPOND.COM
615.336.8405 | info@pumpond.com