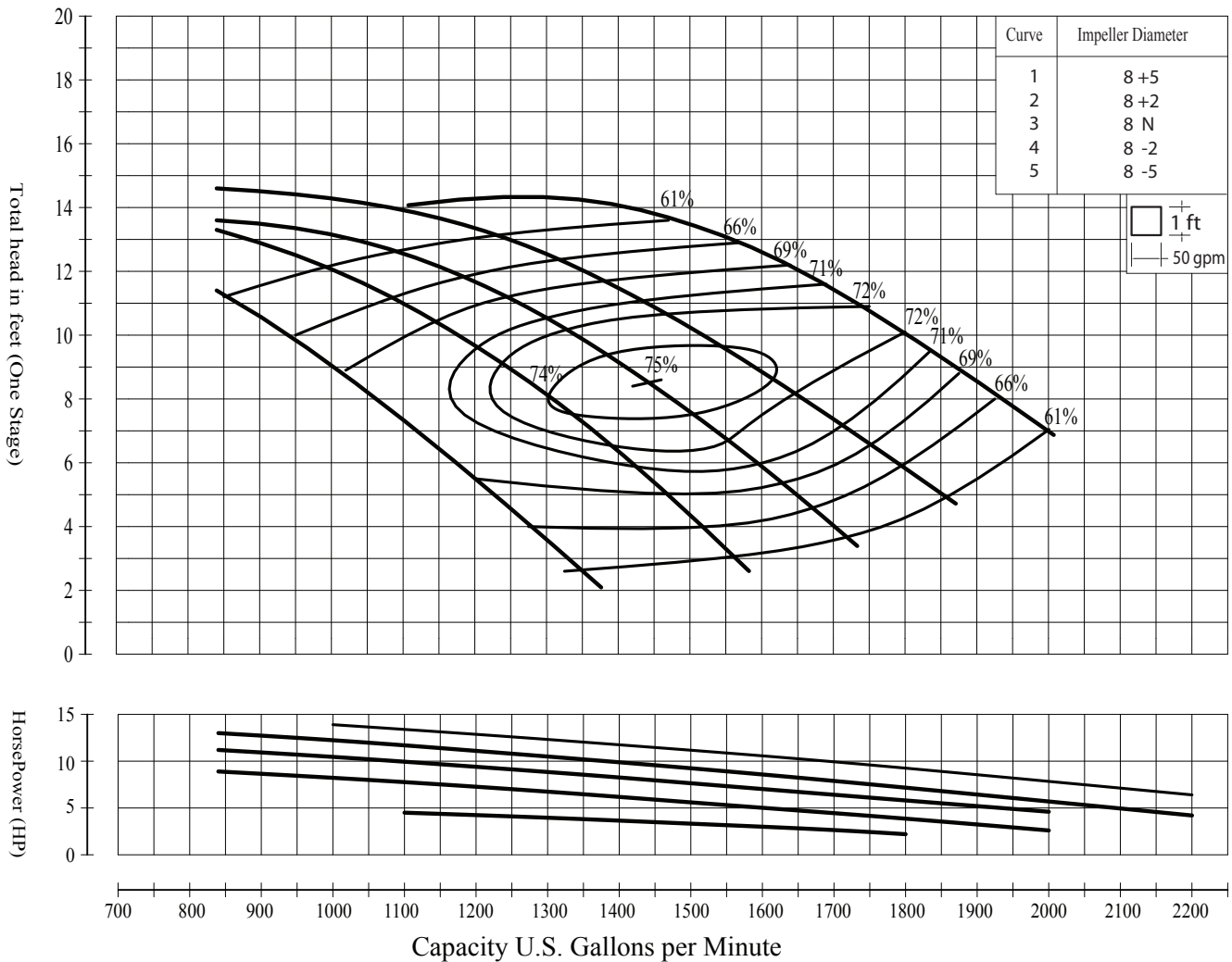


AXIAL FLOW



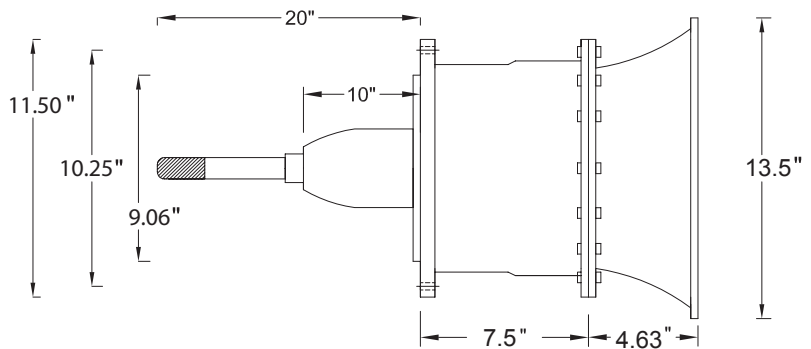


CONTRACTOR: ENGINEER:	GPM TDH HP EFFIC.	MODEL NPP8PO
	SERVICE CONDITION: STAGES	
END USER:	PROJECT:	RPM 1760



CHARACTERISTICS BASED UPON PUMPING CLEAR, NON-AERATED WATER RATING POINT ONLY IS GUARANTEED COLUMN LOSSES NOT INCLUDED

Std. Shaft Diameter	1.0"
Max. Shaft Diameter	1.5"
One Stage WT-LB	112
Add. Stage WT- LB	64
Impeller WT- LB	12.5
One Stage WR ² LB-FT ²	0.26
Impeller Type	AXIAL
Impeller No.	TXPUCCA
Max. Sphere Size	1.75"
K-Factor, Max.	20.0
Max. Operating P.S.I	75
Min. Submergence	23
Bolt Holes	C/F
Bolt Holes Diameter	C/F





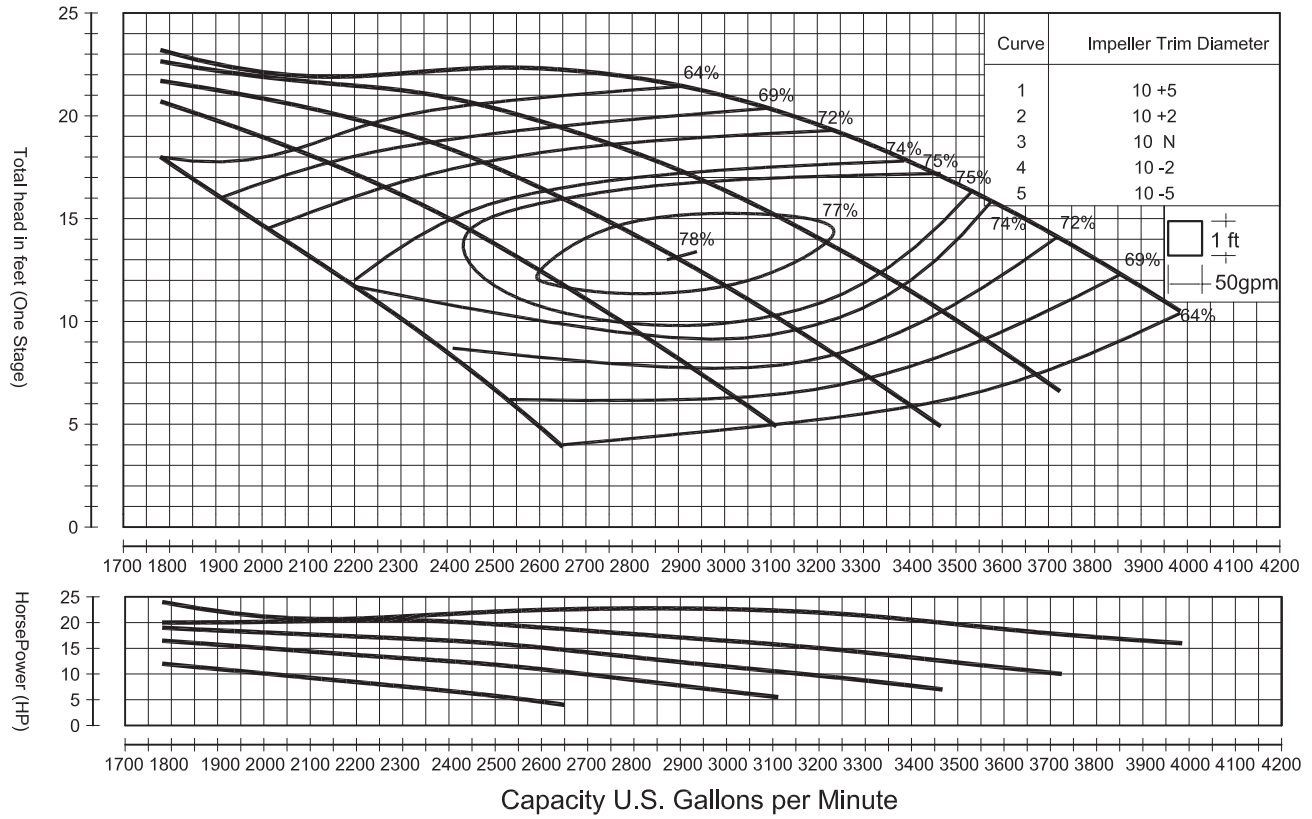
CONTRACTOR:
ENGINEER:

GPM TDH HP EFFIC.
SERVICE CONDITION: **STAGES**

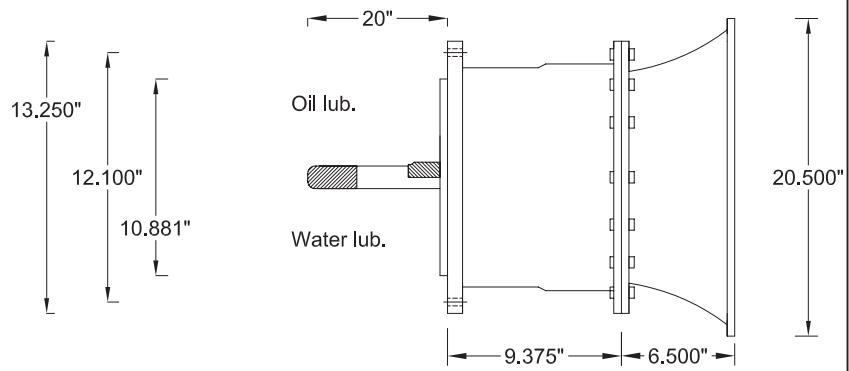
MODEL
NPP10PO

END USER: **PROJECT:**

RPM
1760



Std. Shaft Diameter	1.188"
Max. Shaft Diameter	1.188"
One Stage WT-LB	176.00
Add. Stage WT- LB	99.000
Impeller WT- LB	13.200
One Stage WR ² LB-FT ²	.72
Impeller Type	AXIAL
Impeller No.	TAP1412
Max. Sphere Size	2.250"
K-Factor, Max.	32
Max. Operating P.S.I	100
Min. Submergence	PAGE V-10
Bolt Holes	12
Bolt Holes Diameter	.563



pumpandpond.com





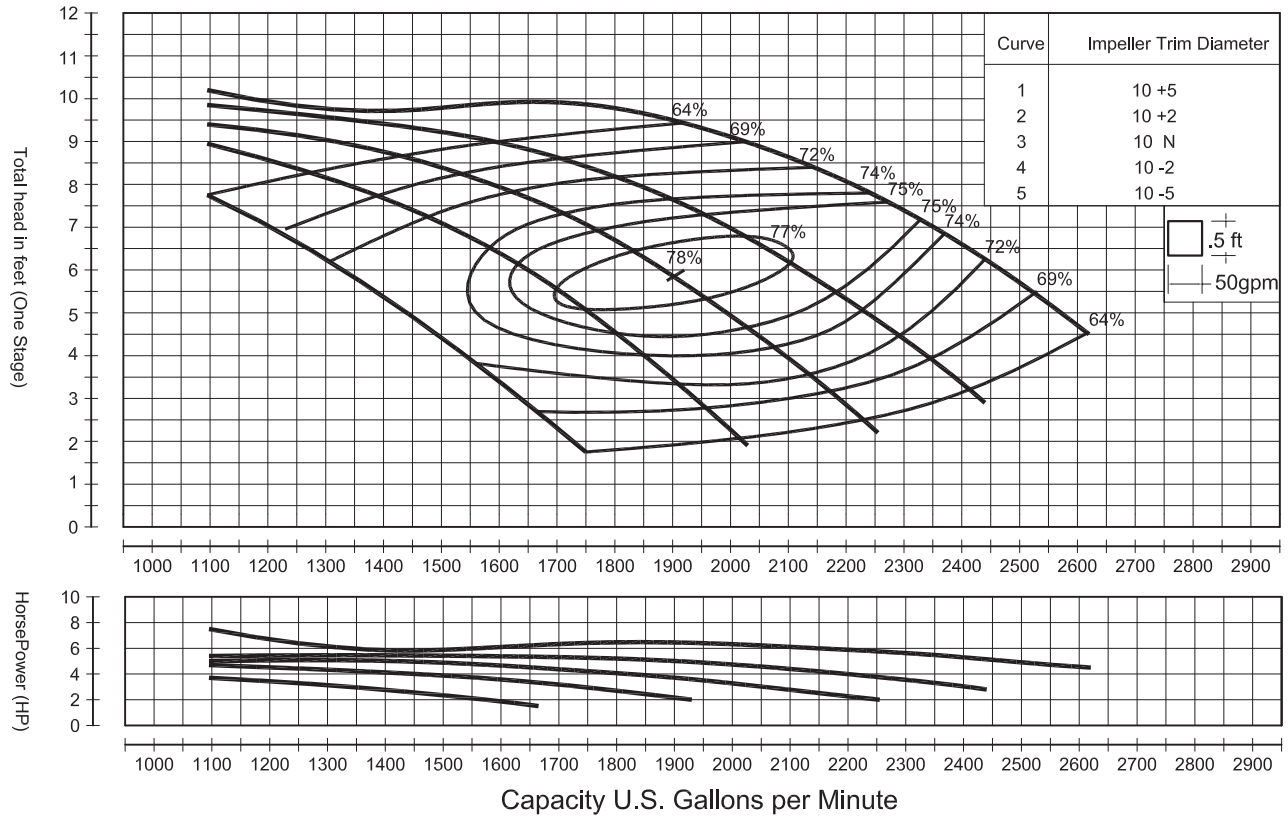
CONTRACTOR:
ENGINEER:

GPM TDH HP EFFIC.
SERVICE CONDITION: **STAGES**

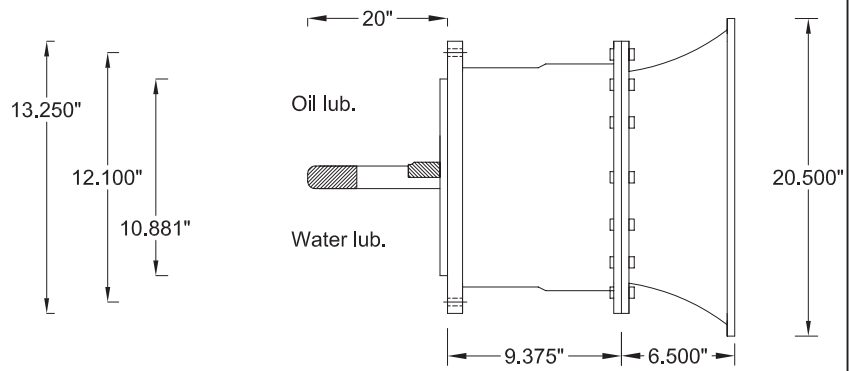
MODEL
NPP10PO

END USER: **PROJECT:**

RPM
1160



Std. Shaft Diameter	1.188"
Max. Shaft Diameter	1.188"
One Stage WT-LB	176.00
Add. Stage WT- LB	99.000
Impeller WT- LB	13.200
One Stage WR ² LB-FT ²	.72
Impeller Type	AXIAL
Impeller No.	TAP1412
Max. Sphere Size	2.250"
K-Factor, Max.	32
Max. Operating P.S.I	100
Min. Submergence	PAGE V-10
Bolt Holes	12
Bolt Holes Diameter	.563



pumpandpond.com





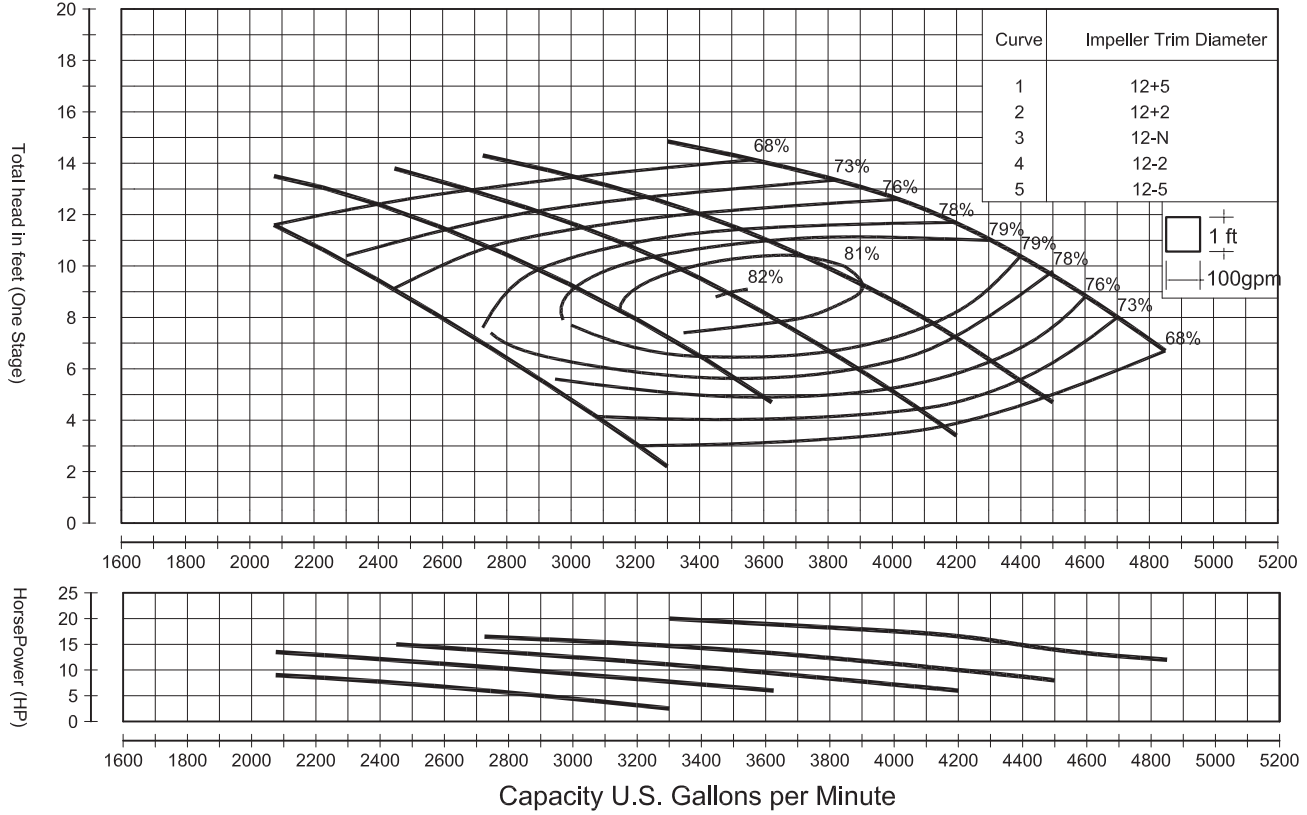
CONTRACTOR:
ENGINEER:

GPM TDH HP EFFIC.
SERVICE CONDITION: **STAGES**

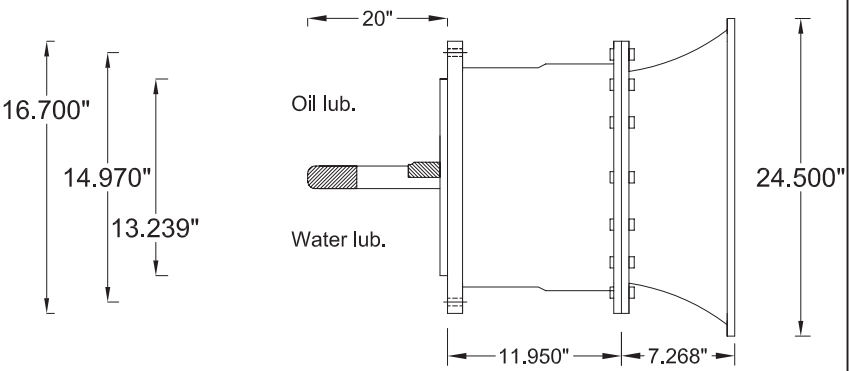
MODEL
NPP12PO

END USER: **PROJECT:**

RPM
1160



Std. Shaft Diameter	1.500"
Max. Shaft Diameter	1.938"
One Stage WT-LB	312.40
Add. Stage WT- LB	176.00
Impeller WT- LB	33.000
One Stage WR ² LB-FT ²	1.90
Impeller Type	AXIAL
Impeller No.	TAP1413
Max. Sphere Size	2.875"
K-Factor, Max.	48
Max. Operating P.S.I	100
Min. Submergence	N/A
Bolt Holes	16
Bolt Holes Diameter	.563

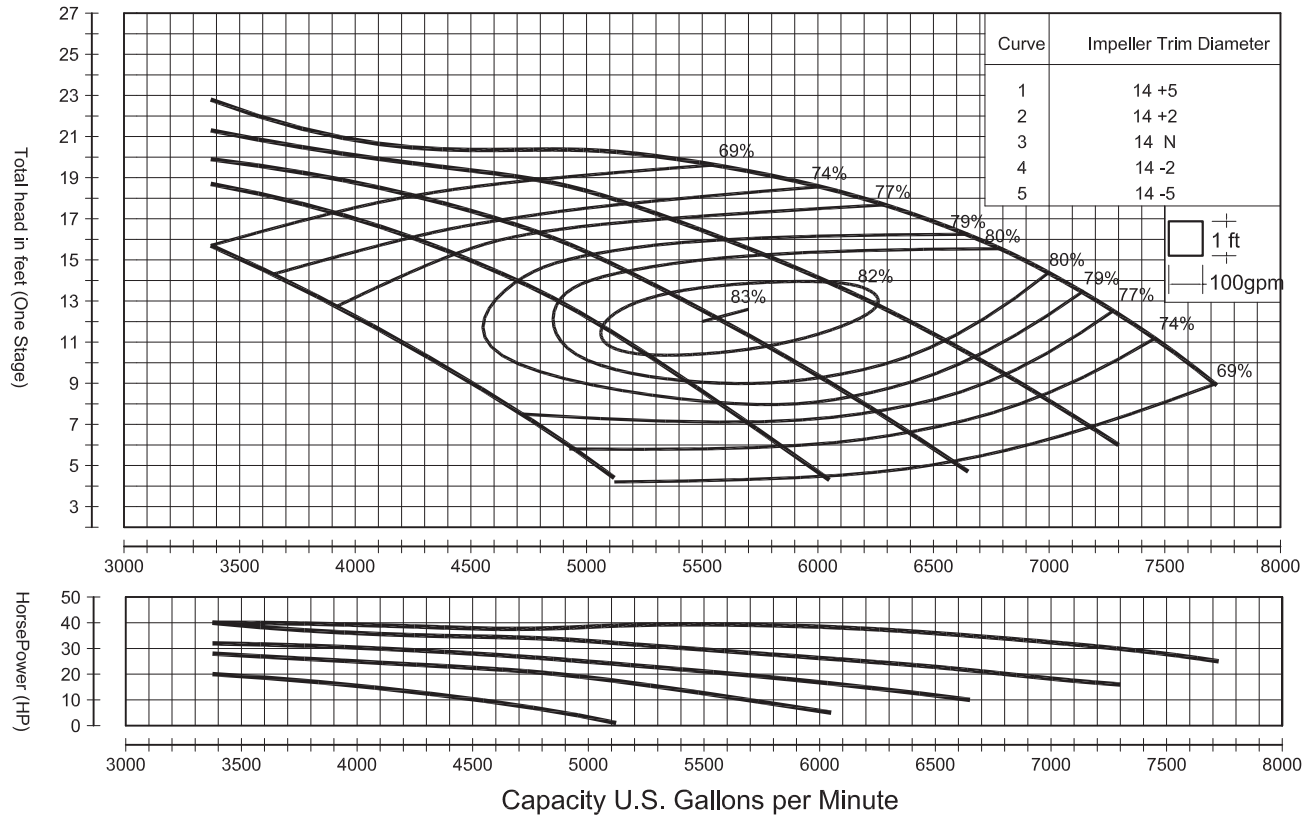


pumpandpond.com

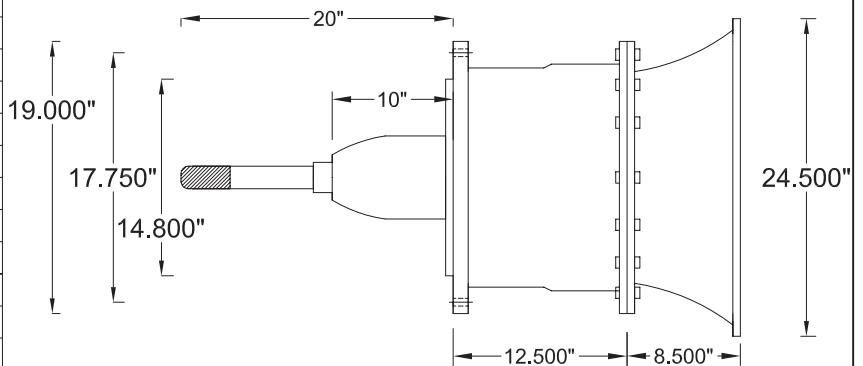




CONTRACTOR:	GPM	TDH	HP	EFFIC.	MODEL NPP14PO
	ENGINEER:			SERVICE CONDITION:	
END USER:		PROJECT:			RPM 1170



Std. Shaft Diameter	1.688"
Max. Shaft Diameter	2.00"
One Stage WT-LB	424.60
Add. Stage WT- LB	250.80
Impeller WT- LB	41.800
One Stage WR ² LB-FT ²	3.400
Impeller Type	AXIAL
Impeller No.	TAP1414
Max. Sphere Size	3.375"
K-Factor, Max.	66
Max. Operating P.S.I	100
Min. Submergence	N/A
Bolt Holes	12
Bolt Holes Diameter	.688



pumpandpond.com





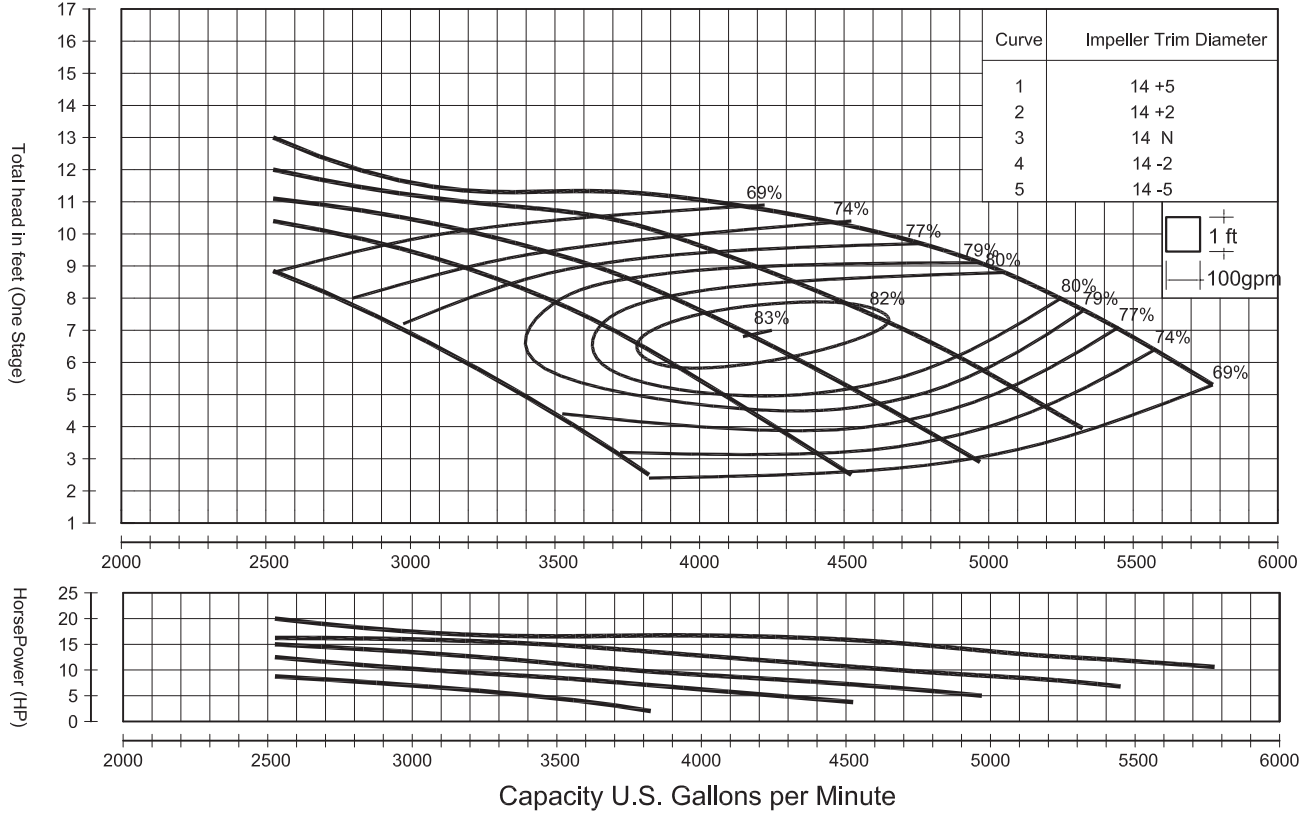
CONTRACTOR:
ENGINEER:

GPM TDH HP EFFIC.
SERVICE CONDITION: **STAGES**

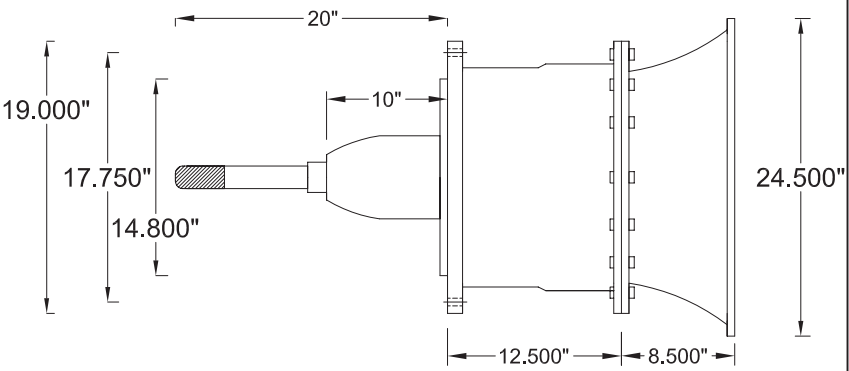
MODEL
NPP14PO

END USER: **PROJECT:**

RPM
875



Std. Shaft Diameter	1.688"
Max. Shaft Diameter	2.00"
One Stage WT-LB	424.60
Add. Stage WT- LB	250.80
Impeller WT- LB	41.800
One Stage WR ² LB-FT ²	3.400
Impeller Type	AXIAL
Impeller No.	TAP1414
Max. Sphere Size	3.375"
K-Factor, Max.	66
Max. Operating P.S.I	100
Min. Submergence	N/A
Bolt Holes	12
Bolt Holes Diameter	.688



pumpandpond.com



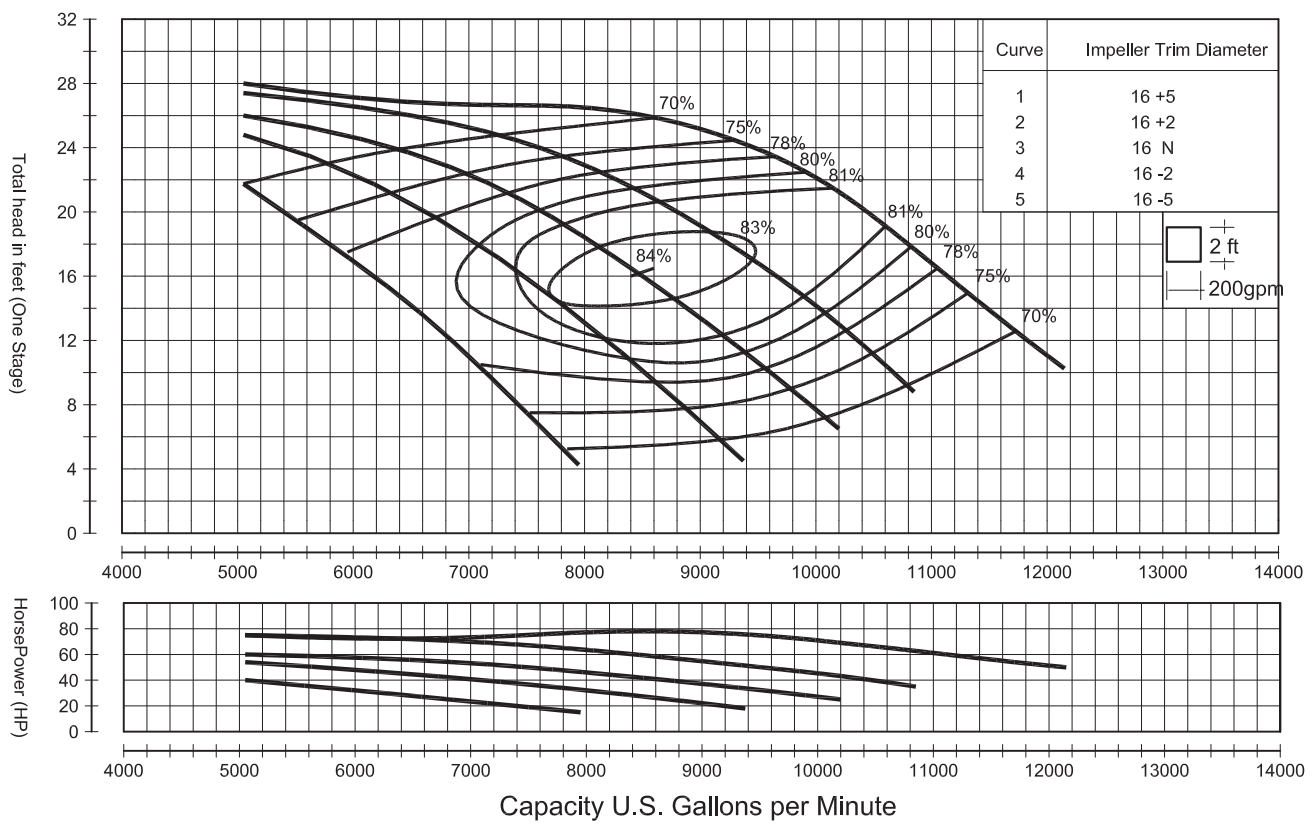


CONTRACTOR:
ENGINEER:

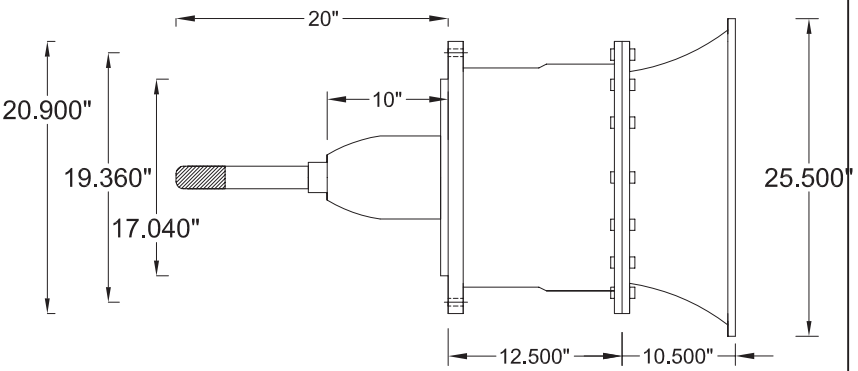
GPM TDH HP EFFIC.
SERVICE CONDITION: **STAGES**

MODEL
NPP16PO
RPM
1180

END USER: **PROJECT:**



Std. Shaft Diameter	1.688"
Max. Shaft Diameter	1.938"
One Stage WT-LB	594.00
Add. Stage WT- LB	354.20
Impeller WT- LB	77.000
One Stage WR ² LB-FT ²	5.800
Impeller Type	AXIAL
Impeller No.	TAP1415
Max. Sphere Size	4.000"
K-Factor, Max.	86
Max. Operating P.S.I	100
Min. Submergence	PAGE IV-11
Bolt Holes	16
Bolt Holes Diameter	.625



pumpandpond.com





CONTRACTOR:
ENGINEER:

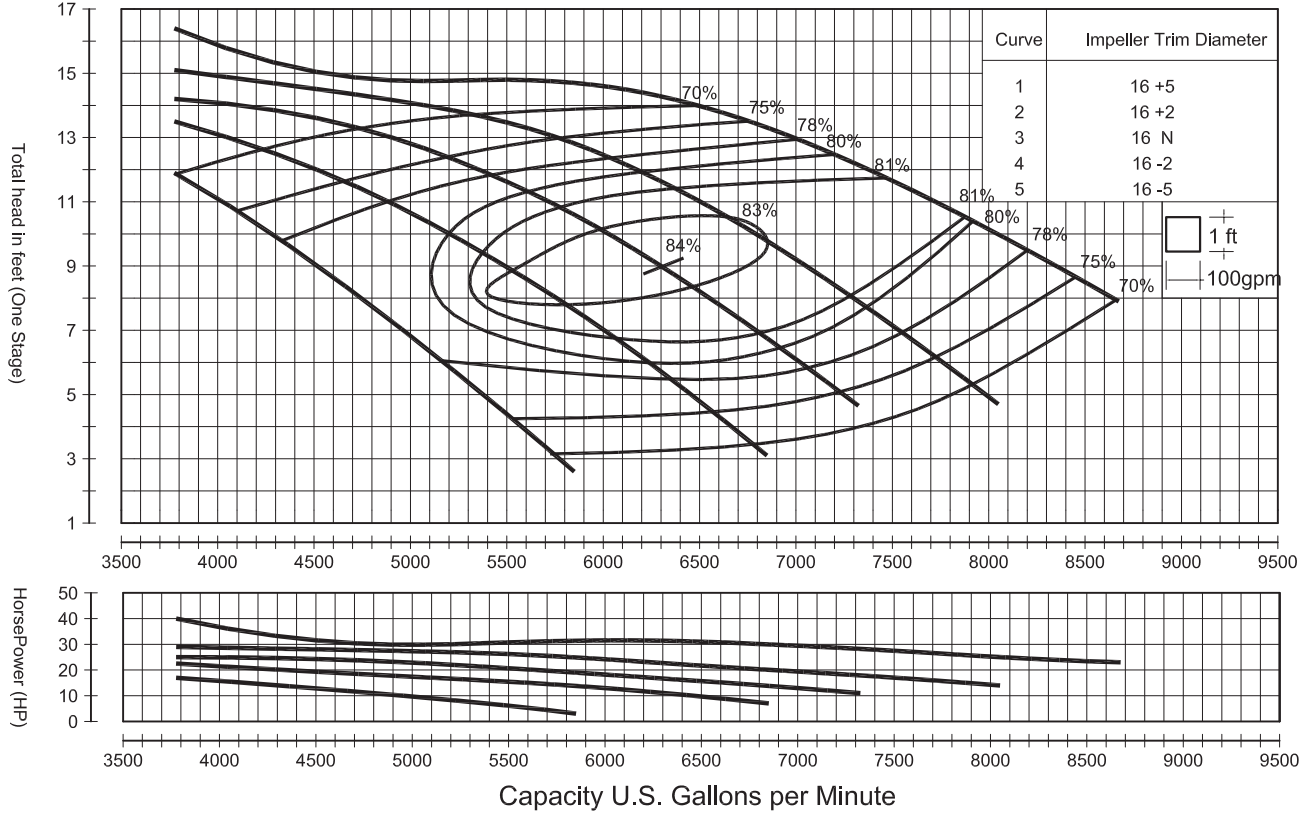
GPM TDH HP EFFIC.
SERVICE CONDITION: **STAGES**

MODEL
NPP16PO

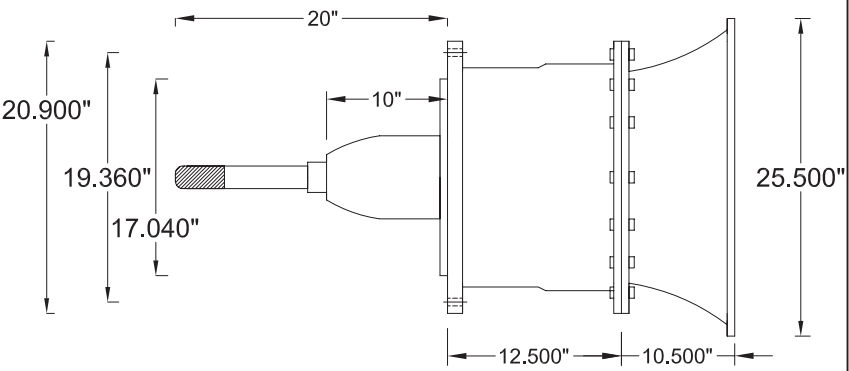
END USER:

PROJECT:

RPM
875



Std. Shaft Diameter	1.688"
Max. Shaft Diameter	1.938"
One Stage WT-LB	594.00
Add. Stage WT- LB	354.20
Impeller WT- LB	77.000
One Stage WR ² LB-FT ²	5.800
Impeller Type	AXIAL
Impeller No.	TAP1415
Max. Sphere Size	4.000"
K-Factor, Max.	86
Max. Operating P.S.I	100
Min. Submergence	PAGE V-11
Bolt Holes	16
Bolt Holes Diameter	.625



pumpandpond.com





AXIAL FLOW

APPLICATIONS:

- Transfer & supply water from lakes, rivers, retention ponds, geothermals & aquifers
- Potable Water
- Irrigation
- High Volume Booster
- Waste Water
- Flood Control
- Dewatering

Flows: up to 28,000 gpm

Total Dynamic Head: 0 - 40 feet

Discharge Designs: Above or Below Surface

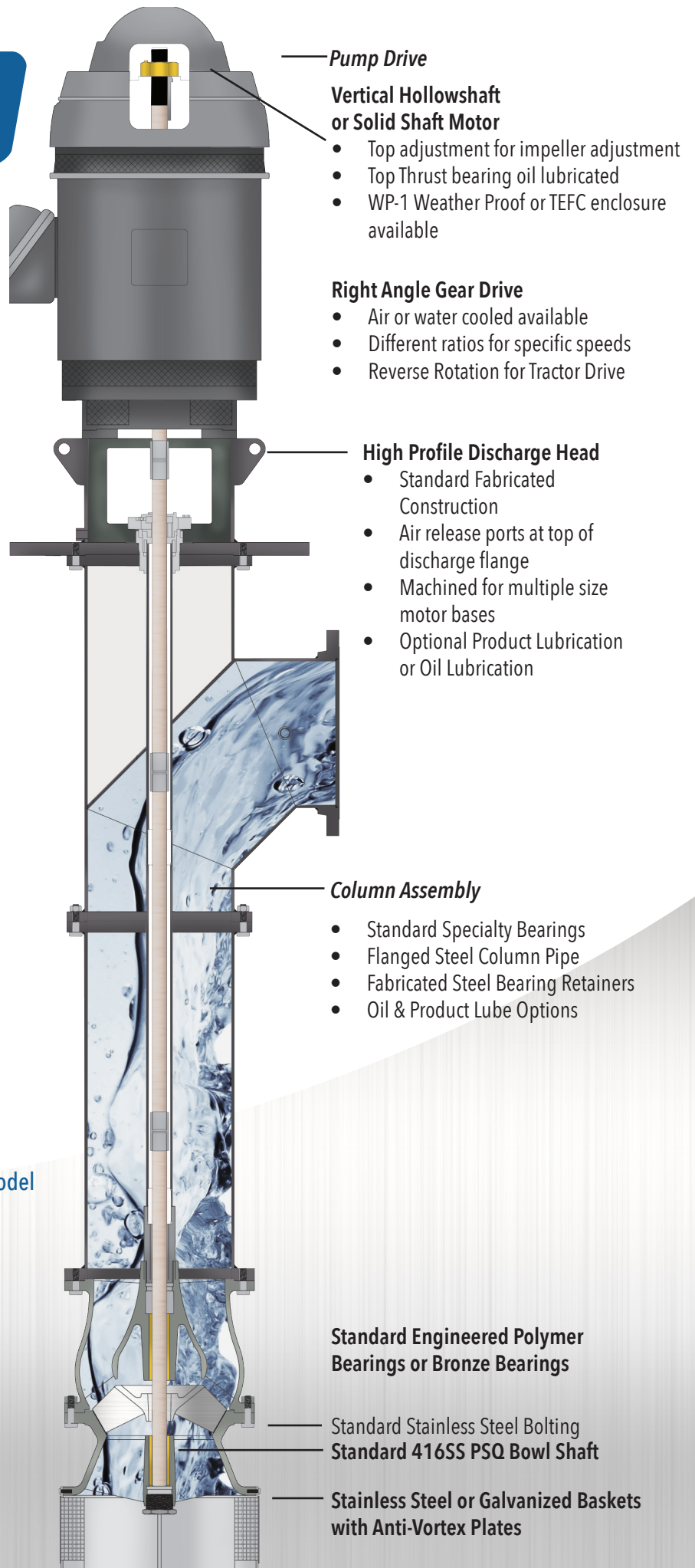
STANDARD FEATURES:

- Standard Bronze or Stainless Steel Impellers
- Standard all Stainless Steel Bolting & Collets
- Standard Specialty bearings

ADDITIONAL FEATURES:

- Low NPSH Design
- Solids passage 2" to 5 7/8" depending on model
- Floating stations available

Material options for use with clean water, salt water, mine water, brines, and corrosives.





AXIAL FLOW ABOVE GRADE

APPLICATIONS:

- Transfer & supply water from lakes, rivers, retention ponds, geothermals & aquifers
- Potable Water
- Irrigation
- High Volume Booster
- Waste Water
- Flood Control
- Dewatering

Flows: up to 28,000 gpm

Total Dynamic Head: 0 - 40 feet

Discharge Designs: Above or Below Surface

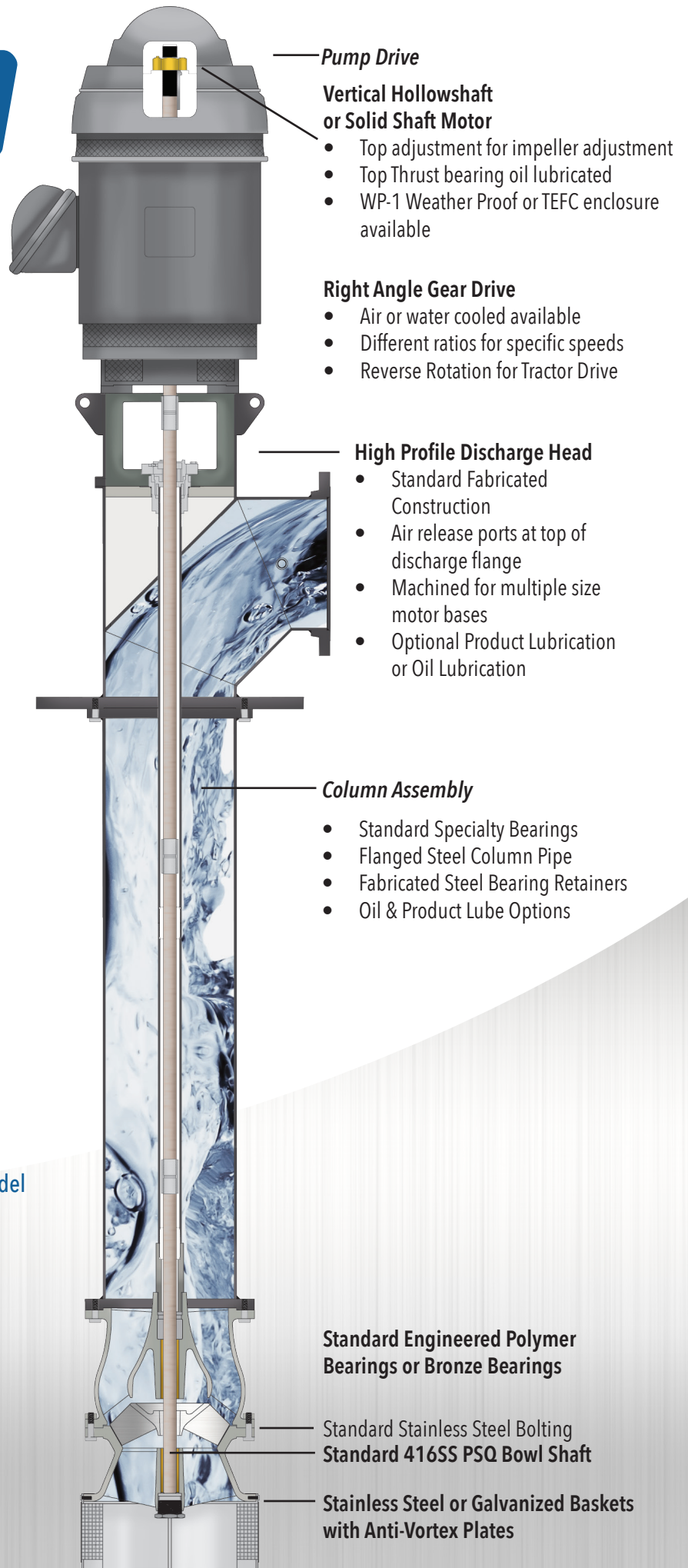
STANDARD FEATURES:

- Standard Bronze or Stainless Steel Impellers
- Standard all Stainless Steel Bolting & Collets
- Standard Specialty bearings

ADDITIONAL FEATURES:

- Low NPSH Design
- Solids passage 2" to 5 7/8" depending on model
- Floating stations available

Material options for use with clean water, salt water, mine water, brines, and corrosives.



Pump Drive

Vertical Hollowshaft or Solid Shaft Motor

- Top adjustment for impeller adjustment
- Top Thrust bearing oil lubricated
- WP-1 Weather Proof or TEFC enclosure available

Right Angle Gear Drive

- Air or water cooled available
- Different ratios for specific speeds
- Reverse Rotation for Tractor Drive

High Profile Discharge Head

- Standard Fabricated Construction
- Air release ports at top of discharge flange
- Machined for multiple size motor bases
- Optional Product Lubrication or Oil Lubrication

Column Assembly

- Standard Specialty Bearings
- Flanged Steel Column Pipe
- Fabricated Steel Bearing Retainers
- Oil & Product Lube Options

Standard Engineered Polymer Bearings or Bronze Bearings

Standard Stainless Steel Bolting Standard 416SS PSQ Bowl Shaft

Stainless Steel or Galvanized Baskets with Anti-Vortex Plates



CONTRACTOR:
ENGINEER:

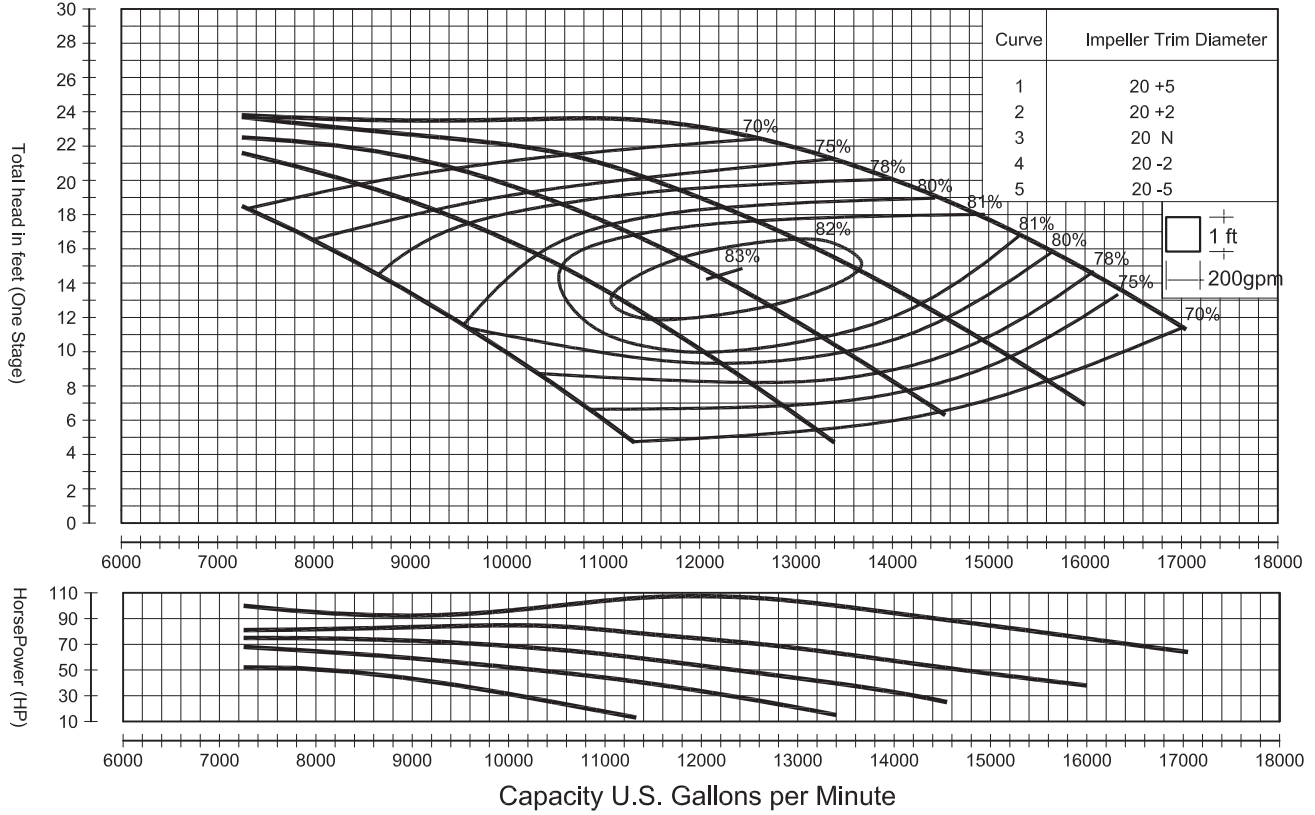
GPM TDH HP EFFIC.
SERVICE CONDITION: **STAGES**

MODEL
NPP20PO

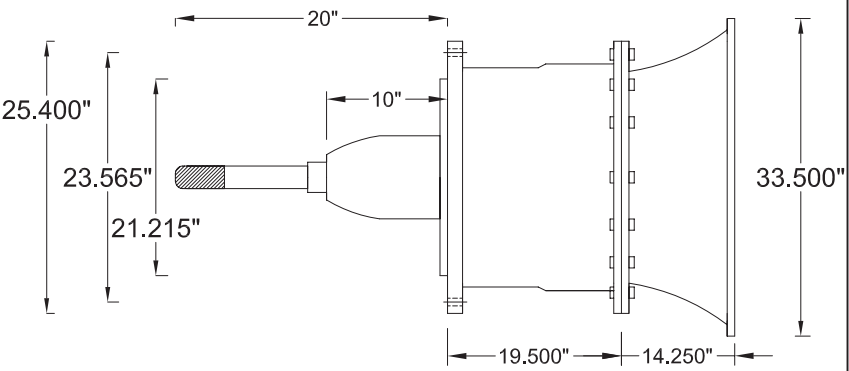
END USER:

PROJECT:

RPM
880



Std. Shaft Diameter	1.938"
Max. Shaft Diameter	2.938"
One Stage WT-LB	965.80
Add. Stage WT- LB	609.40
Impeller WT- LB	94.600
One Stage WR ² LB-FT ²	18.00
Impeller Type	AXIAL
Impeller No.	TAP1417
Max. Sphere Size	4.875"
K-Factor, Max.	135
Max. Operating P.S.I	100
Min. Submergence	PAGE V-11
Bolt Holes	16
Bolt Holes Diameter	.875



pumpandpond.com



CONTRACTOR:
ENGINEER:

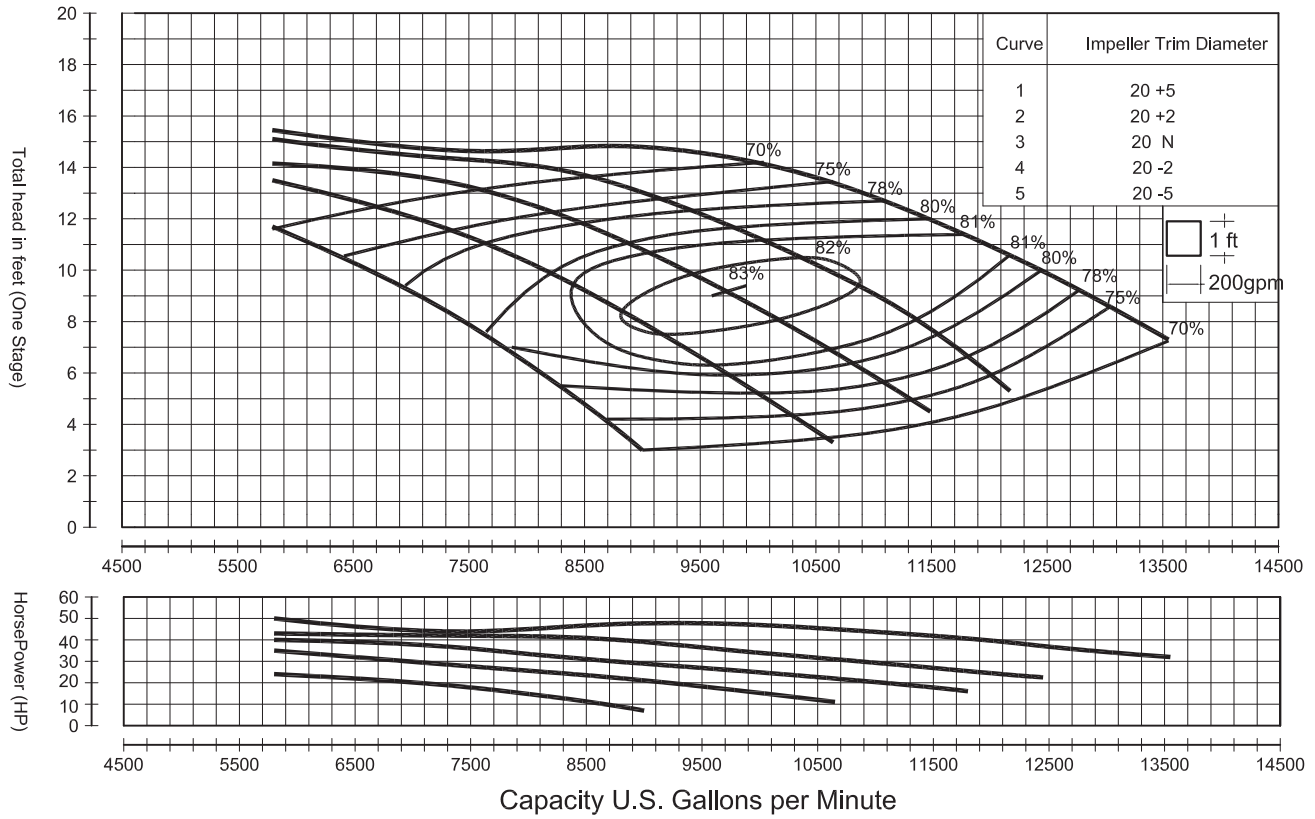
GPM TDH HP EFFIC.
SERVICE CONDITION: **STAGES**

MODEL
NPP20PO

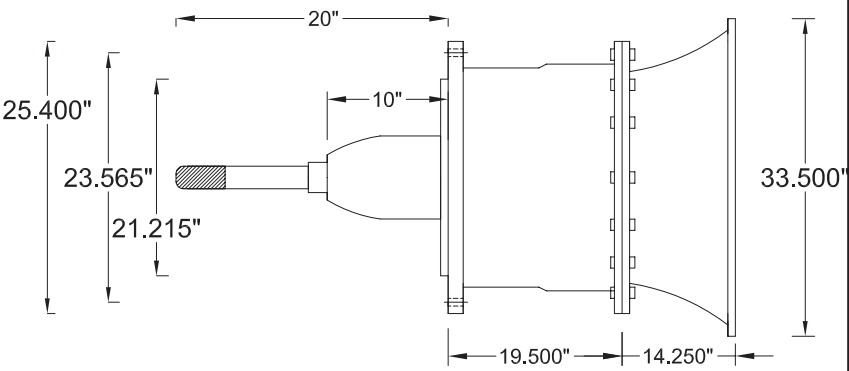
END USER:

PROJECT:

RPM
700



Std. Shaft Diameter	1.938"
Max. Shaft Diameter	2.938"
One Stage WT-LB	965.80
Add. Stage WT- LB	609.40
Impeller WT- LB	94.600
One Stage WR ² LB-FT ²	18.00
Impeller Type	AXIAL
Impeller No.	TAP1417
Max. Sphere Size	4.875"
K-Factor, Max.	135
Max. Operating P.S.I	100
Min. Submergence	PAGE V-11
Bolt Holes	16
Bolt Holes Diameter	.875

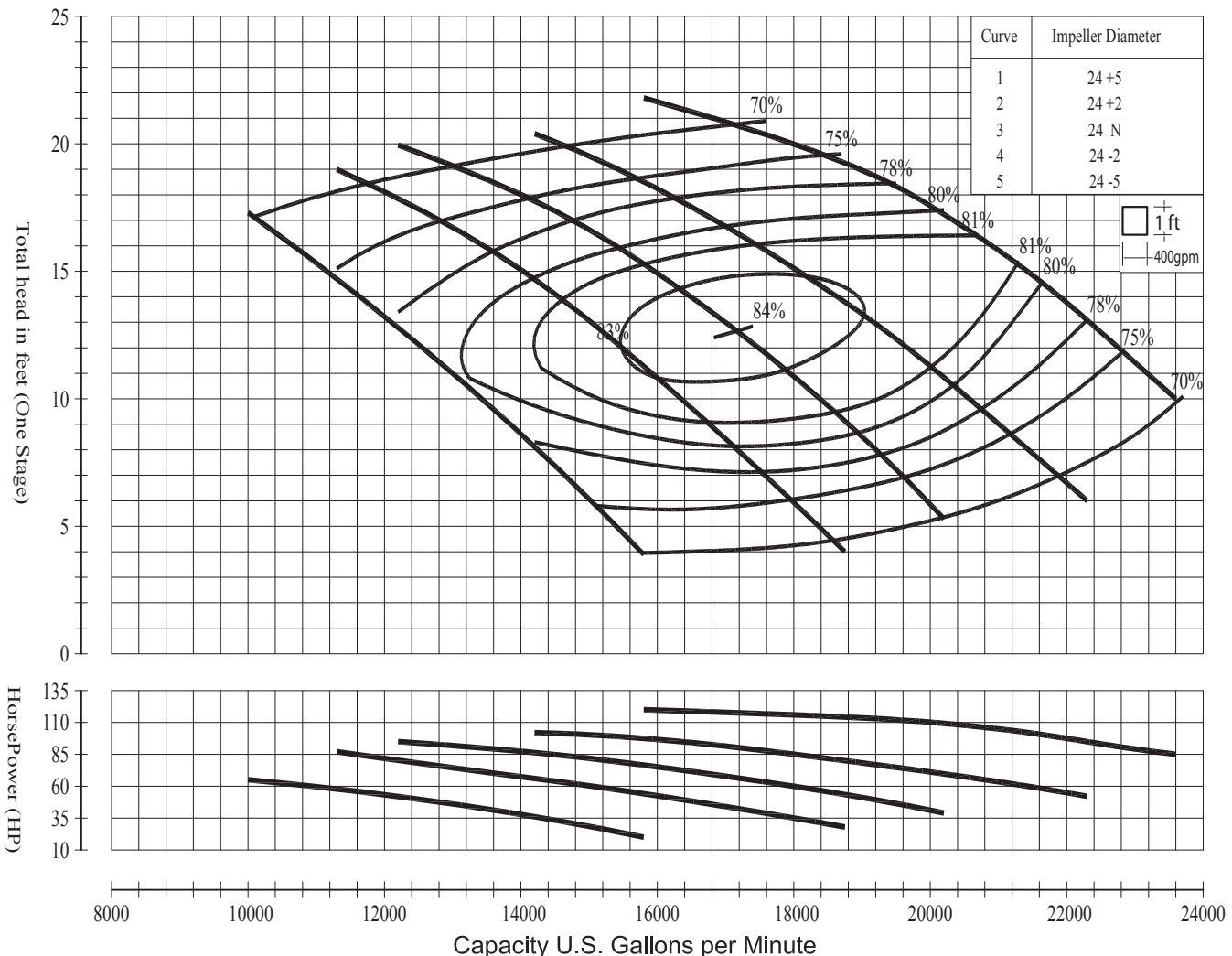


pumpandpond.com

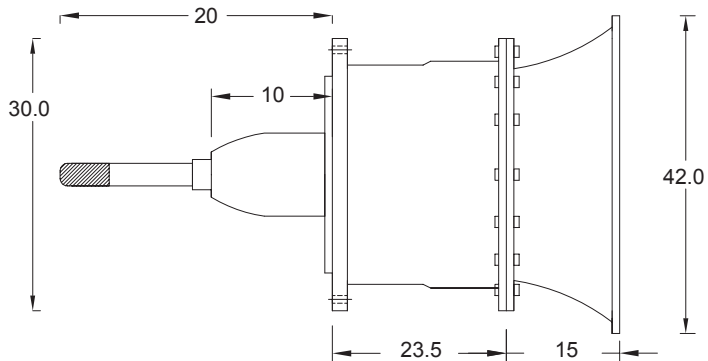




CONTRACTOR:	GPM	TDH	HP	EFFIC.	MODEL NPP24PO
ENGINEER:	SERVICE CONDITION:		STAGES		
END USER:	PROJECT:				RPM 700



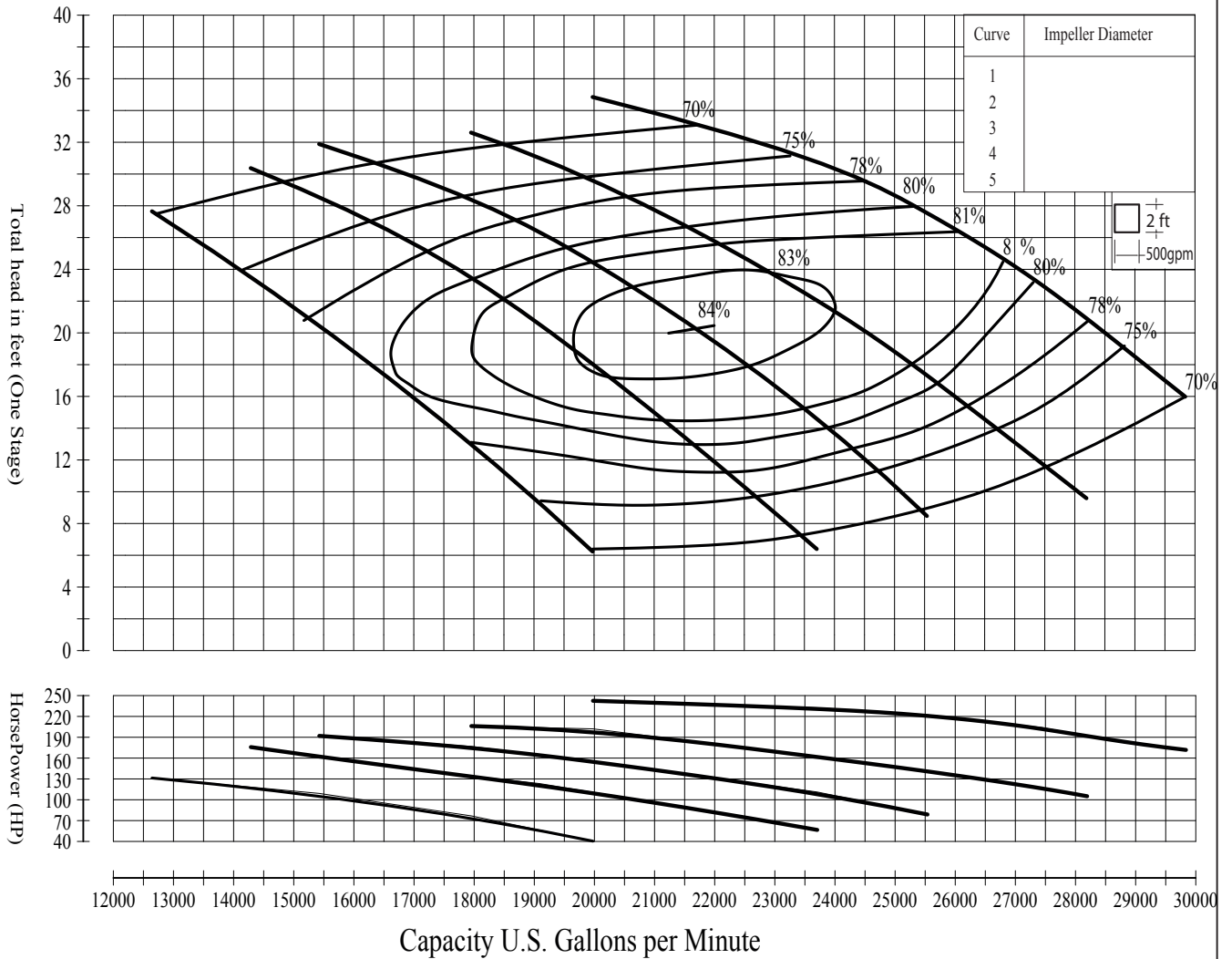
Std. Shaft Diameter	1 15/16
Max. Shaft Diameter	2 7/16
One Stage WT-LB	1600
Add. Stage WT- LB	980
Impeller WT- LB	200
One Stage WR ² LB-FT ²	41
Impeller Type	AXIAL
Impeller No.	ETPASES
Max. Sphere Size	5 7/8
K-Factor, Max.	194
Max. Operating P.S.I	75
Min. Submergence	93.25plg



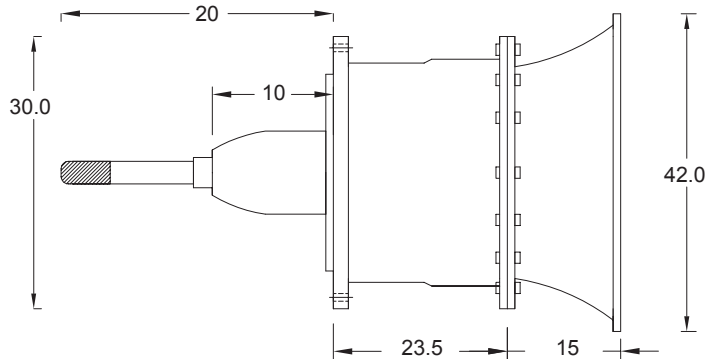
pumpandpond.com



CONTRACTOR:	GPM	TDH	HP	EFFIC.	MODEL NPP24PO
ENGINEER:	SERVICE CONDITION:			STAGES	
END USER:	PROJECT:				RPM 885



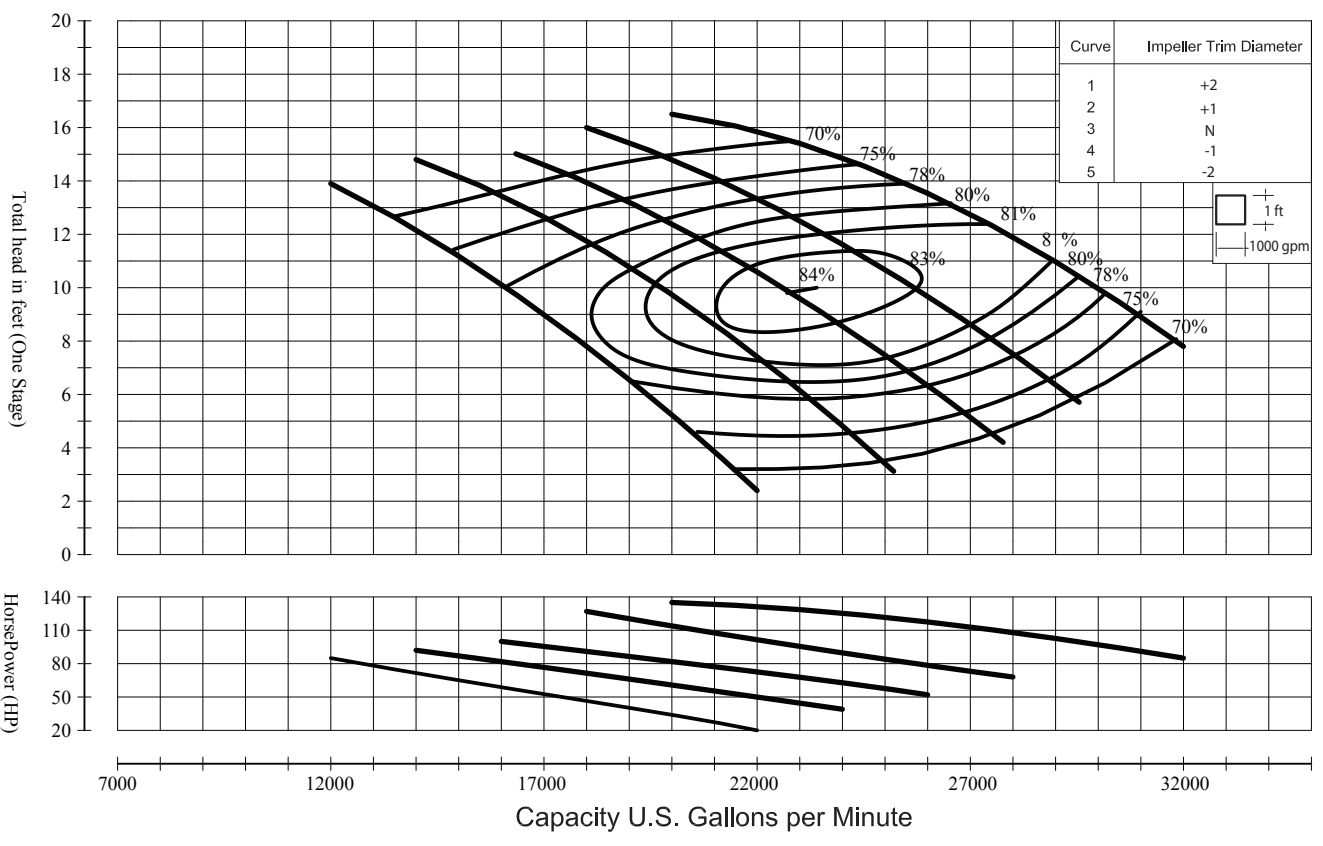
Std. Shaft Diameter	1 15/16
Max. Shaft Diameter	2 7/16
One Stage WT-LB	1600
Add. Stage WT- LB	980
Impeller WT- LB	200
One Stage WR ² LB-FT ²	41
Impeller Type	AXIAL
Impeller No.	ETPASES
Max. Sphere Size	5 7/8
K-Factor, Max.	194
Max. Operating P.S.I	75
Min. Submergence	93.25plg



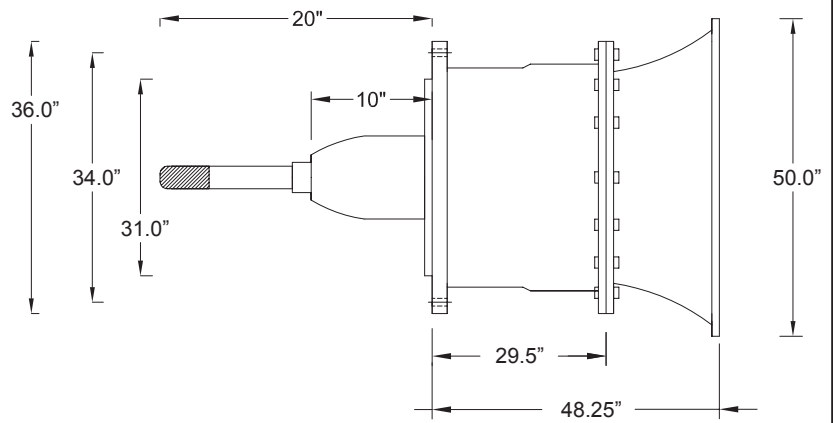
pumpandpond.com



CONTRACTOR:	GPM	TDH	HP	EFFIC.	MODEL NPP30PO
ENGINEER:	SERVICE CONDITION:			STAGES	
END USER:	PROJECT:				RPM 490



Std. Shaft Diameter	2.688"
Max. Shaft Diameter	3.000"
One Stage WT-LB	2,600
Add. Stage WT- LB	1,510
Impeller WT- LB	340
One Stage WR ² LB-FT ²	176
Impeller Type	AXIAL
Impeller No.	_____
Max. Sphere Size	7.25
K-Factor, Max.	304
Max. Operating P.S.I	100
Min. Submergence	PAGE IV-11
Bolt Holes	24
Bolt Holes Diameter	.875



pumpandpond.com



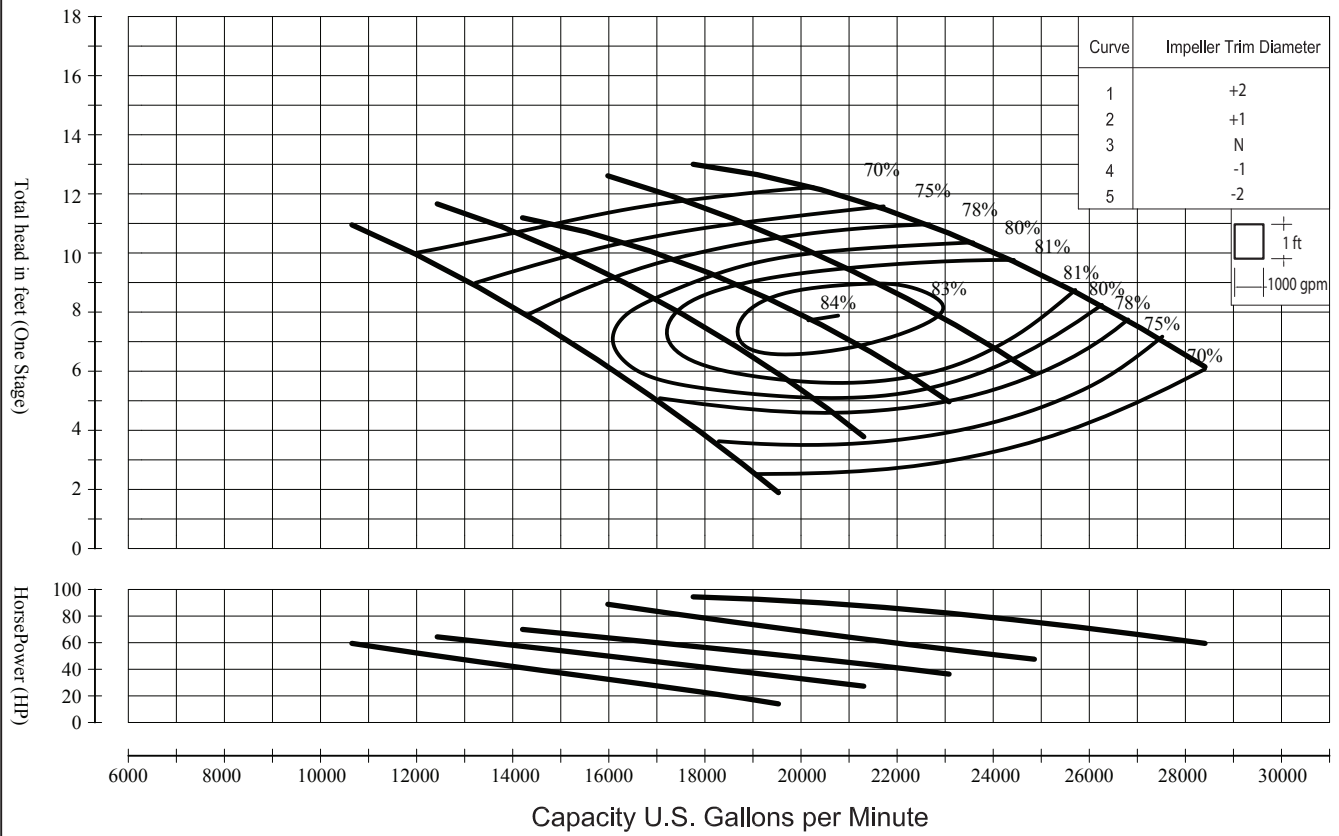


CONTRACTOR:
ENGINEER:

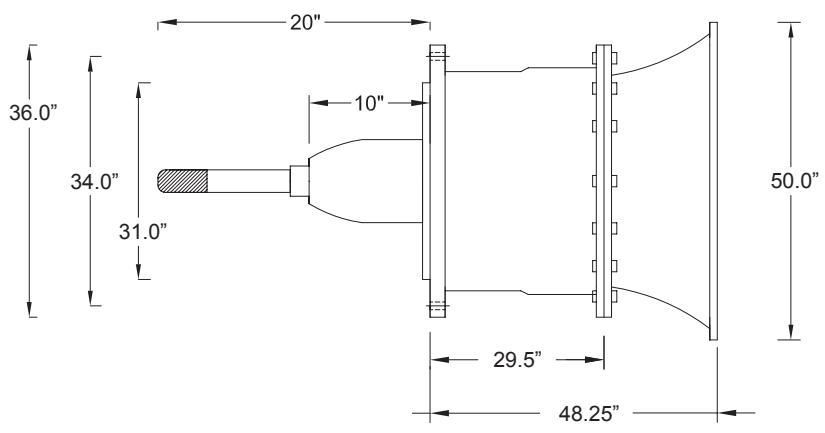
GPM TDH HP EFFIC.
SERVICE CONDITION: **STAGES**

MODEL
NPP30PO
RPM
435

END USER: **PROJECT:**



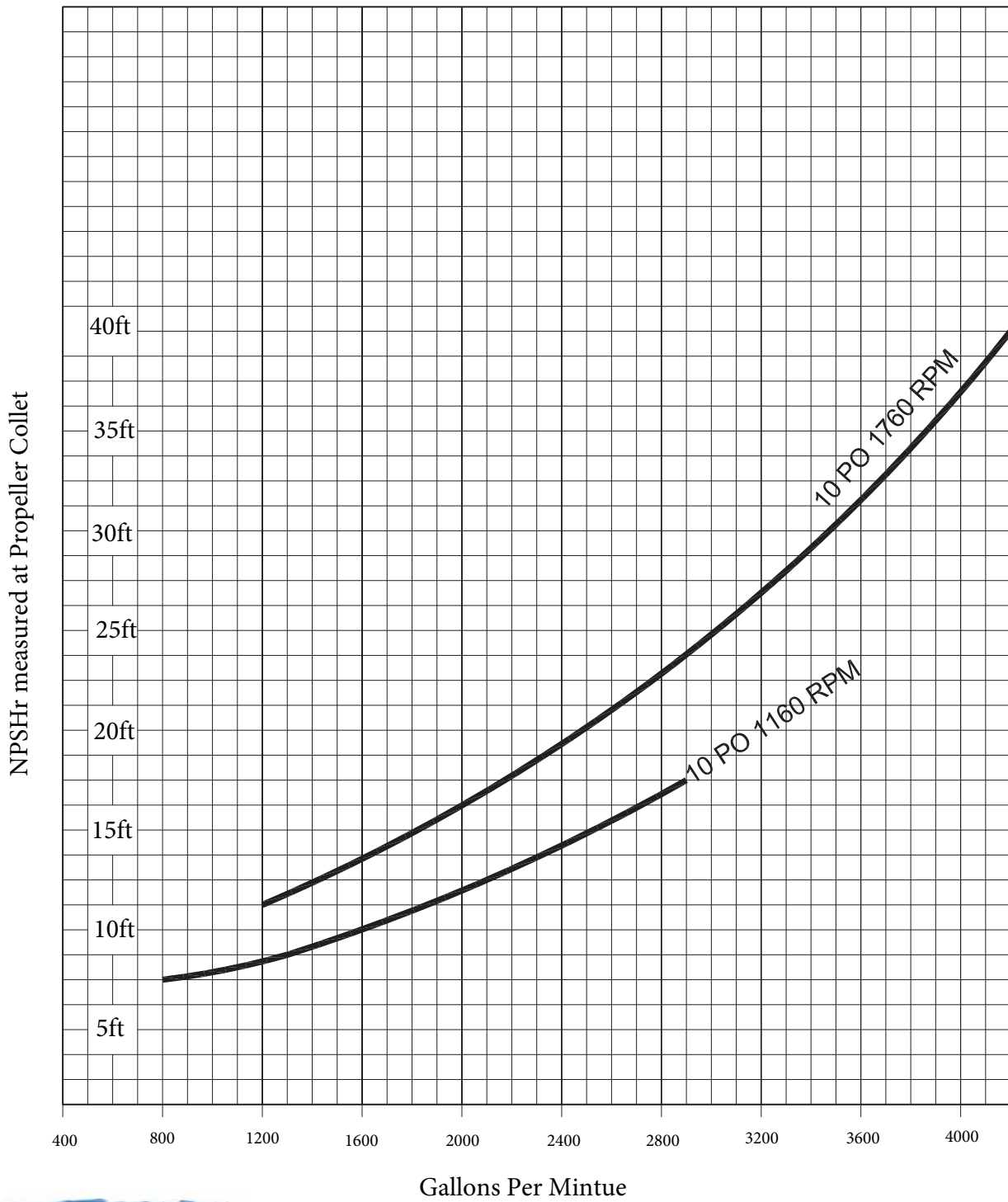
Std. Shaft Diameter	2.688"
Max. Shaft Diameter	3.000"
One Stage WT-LB	2,600
Add. Stage WT- LB	1,510
Impeller WT- LB	340
One Stage WR ² LB-FT ²	176
Impeller Type	AXIAL
Impeller No.	—
Max. Sphere Size	7.25
K-Factor, Max.	304
Max. Operating P.S.I	100
Min. Submergence	PAGE IV-11
Bolt Holes	24
Bolt Holes Diameter	.875



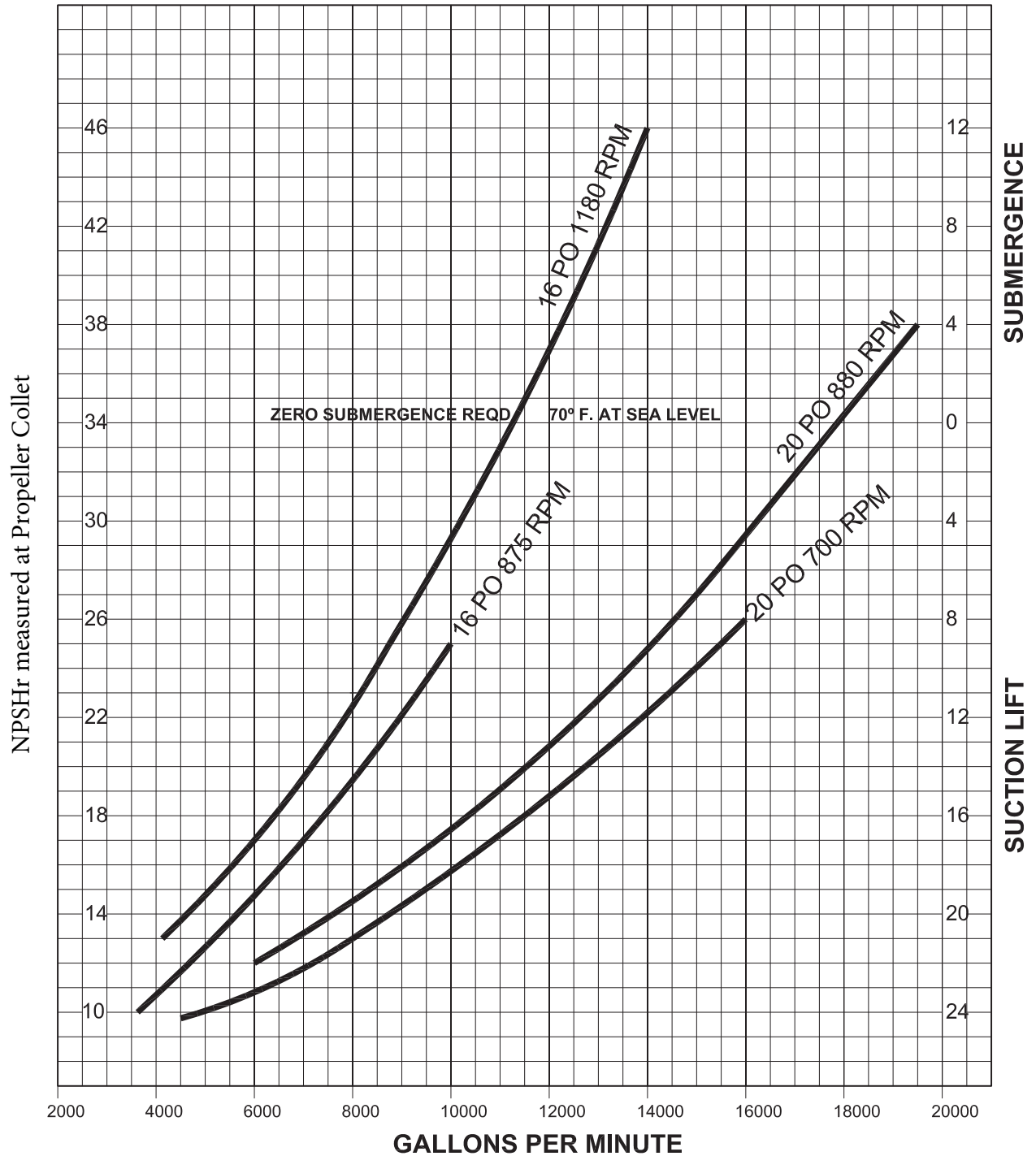
pumpandpond.com



Net Positive Suction Head Required



NET POSITIVE SUCTION HEAD REQUIREMENT





WWW.PUMPANDPOND.COM
615.336.8405 | info@pumpond.com

2017

